

# GRAND GATEWAY - GRADE SEPARATION STUDY

## PUBLIC HEARING

*December 10, 2025*



# AGENDA

**Purpose of Public Hearing**

**Project Overview**

**Alternatives Analysis**

**Preferred Alternative**

**Land Acquisition + Construction**

**Next Steps**





# PURPOSE OF PUBLIC HEARING





# PURPOSE OF PUBLIC HEARING

**Provide overview and current project status**

**Present Preferred Alternative**

**Provide opportunity to review project materials**

**Provide opportunity for comments and questions**

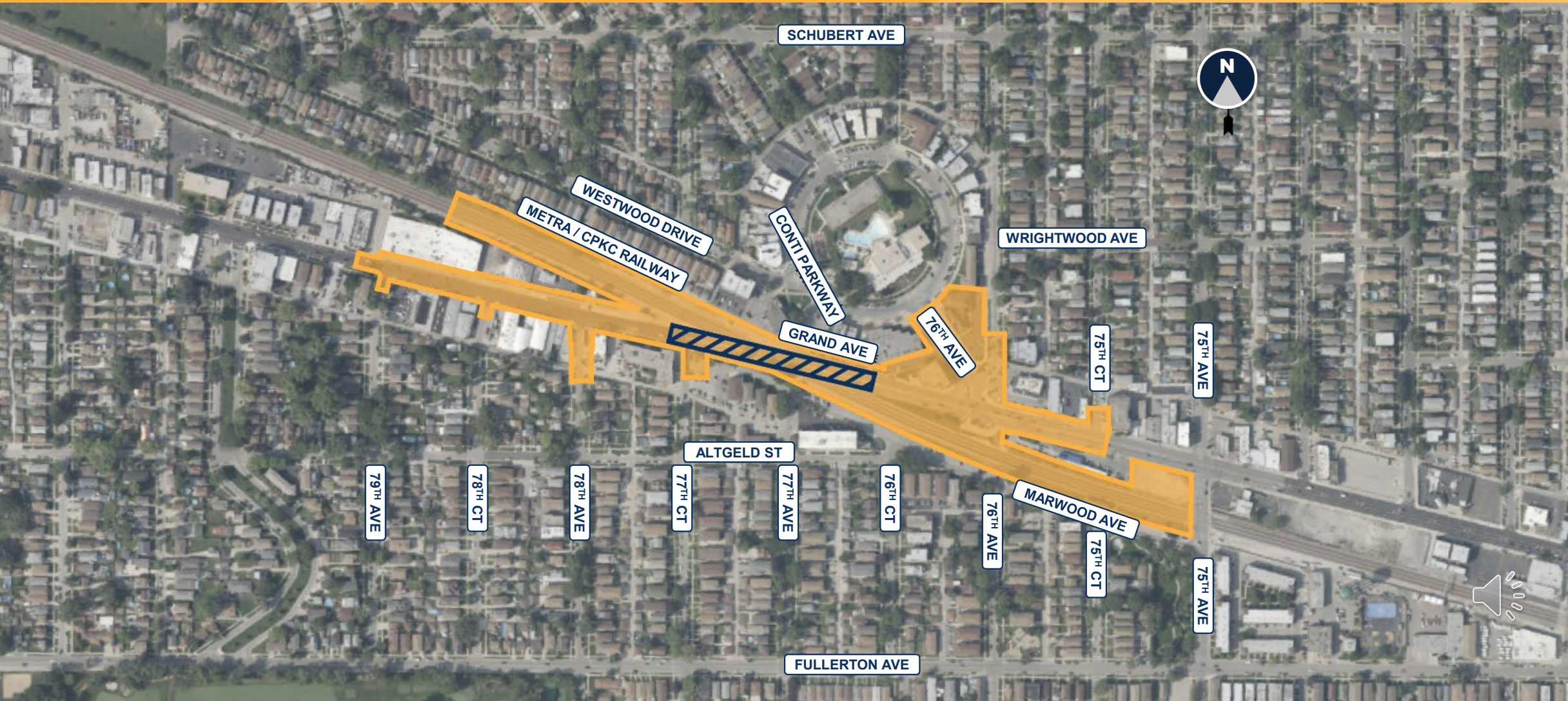




# PROJECT OVERVIEW



# PROJECT STUDY AREA



# PROJECT DEVELOPMENT PROCESS



Planning and Environmental Linkages Study (PEL)  
Pre-Phase I

Phase I  
Preliminary Engineering and  
Environmental Studies

Phase II  
• Final Design and Property Acquisition

Phase III  
• Project Construction

## Grand Gateway Stakeholder Involvement

- Community Advisory Group Meetings (4)
- Public Information Meetings (2)
- Small Group Meetings
- Study area outreach (letters & survey)



# PROJECT BENEFITS



Increased Safety



Improved Local and Regional  
Access



Improved Mobility for All Modes of  
Transportation

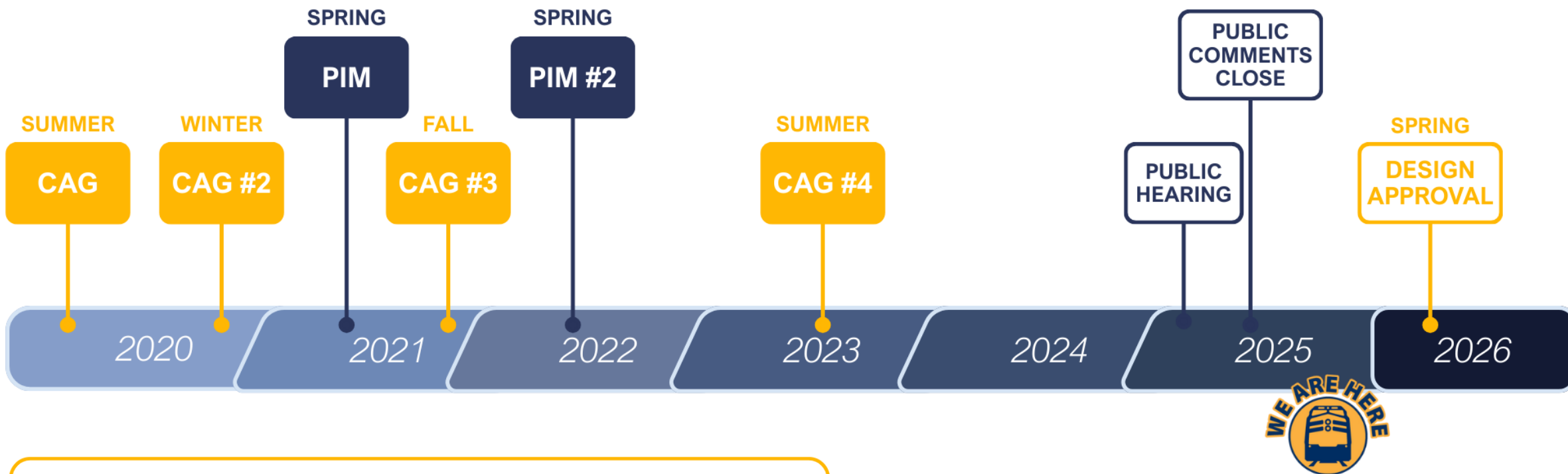


Increased Emergency Response  
Efficiency





# PEL & PHASE I STUDY TIMELINE



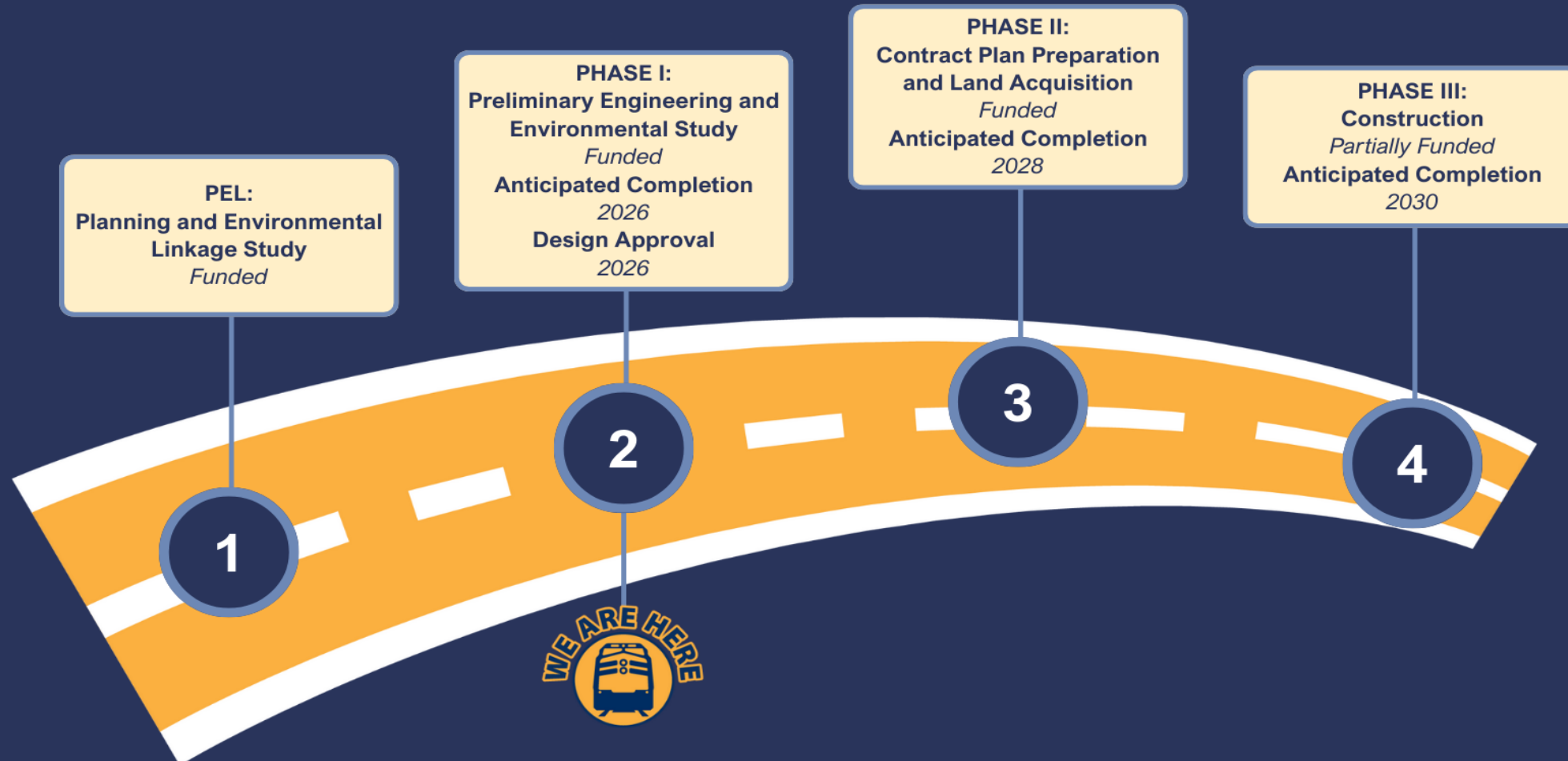
<b>CAG #1</b>	Community Advisory Group Meeting	<b>PUBLIC COMMENTS CLOSE</b>	Targeted Public Comments Closing
<b>PIM #1</b>	Public Information Meeting	<b>DESIGN APPROVAL</b>	Targeted Design Approval

Subject to change





# PROJECT DEVELOPMENT PROCESS



# EXISTING AT-GRADE CROSSING FEATURES



- Sharp, 10-degree skew
- Longest crossing in Illinois
- Vehicles stop or become trapped within crossing
- Causes severe injury and fatal crashes



# SAFETY CONCERNS



## Nine Fatalities since 1956

### Recent Fatal Crashes in 2020 & 2022

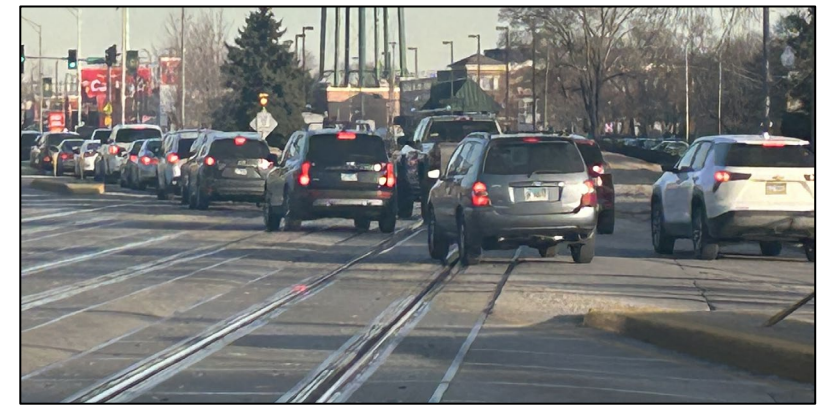


#### November 2005 Incident

- 18 cars damaged or destroyed
- 10 Injured
- Federal Mandate



#### School Bus under gate



#### Vehicles stopped within Crossing



# CONGESTION



Daily Grand Avenue Congestion

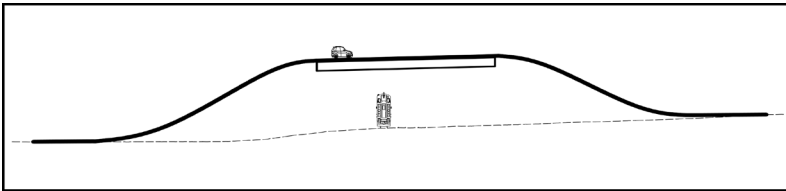




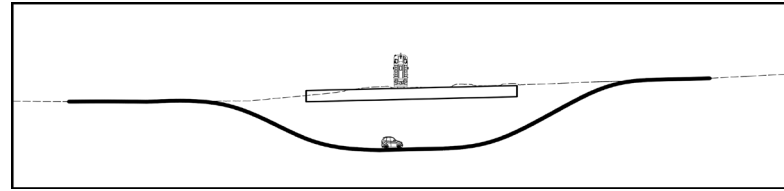
# ALTERNATIVES CONSIDERED



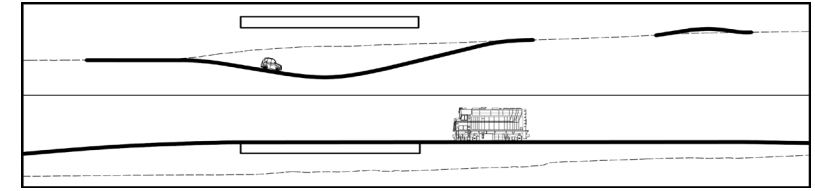
# ALTERNATIVES EVALUATION



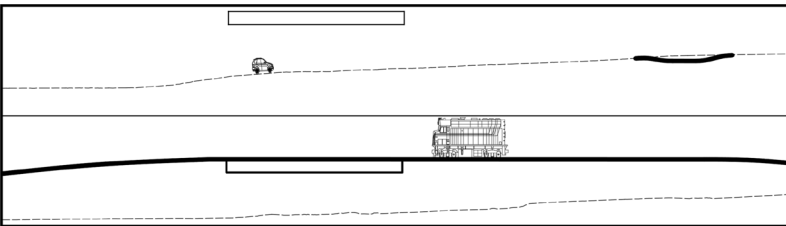
**Alternative 1:  
Grand Ave. Over Railroad**



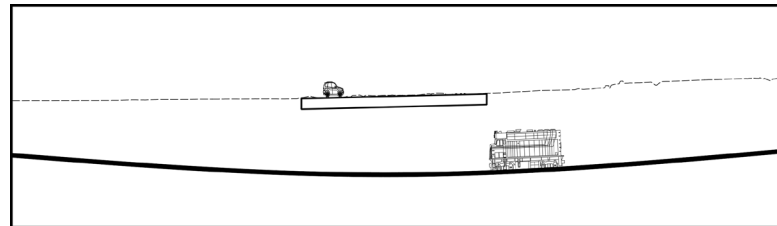
**Alternative 2:  
Grand Ave. Under Railroad**



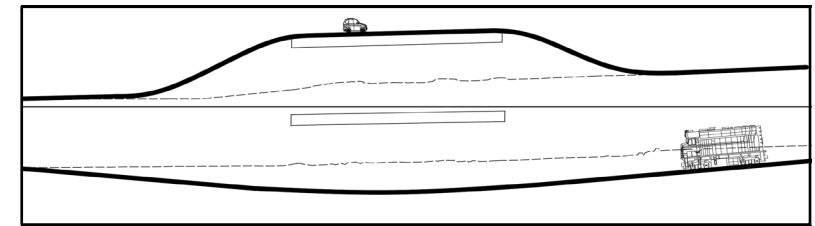
**Alternative 3:  
Lower Grand Ave./Raise Railroad**



**Alternative 4:  
Railroad Over Grand Ave.**



**Alternative 5:  
Railroad Under Grand Ave.**



**Alternative 6:  
Lower Railroad/Raise Grand Ave.**



# ALTERNATIVES COMPARISON



## Methodology:

- 19 Evaluation Criteria Developed
- Stakeholder Weighted
- Technical Factors Only

Methodology	Alt 1	Alt 2	Alt 3	Alt 4	Alt 5	Alt 6
Stakeholder Weighted	217	265	257	224	189	258
Technical Factors	78	85	82	75	64	83

## Evaluation Results

**Alternative 2 identified as the top performing Alternative**

- Addresses transportation needs
- Impacts minimized to extent practical
- General stakeholder support

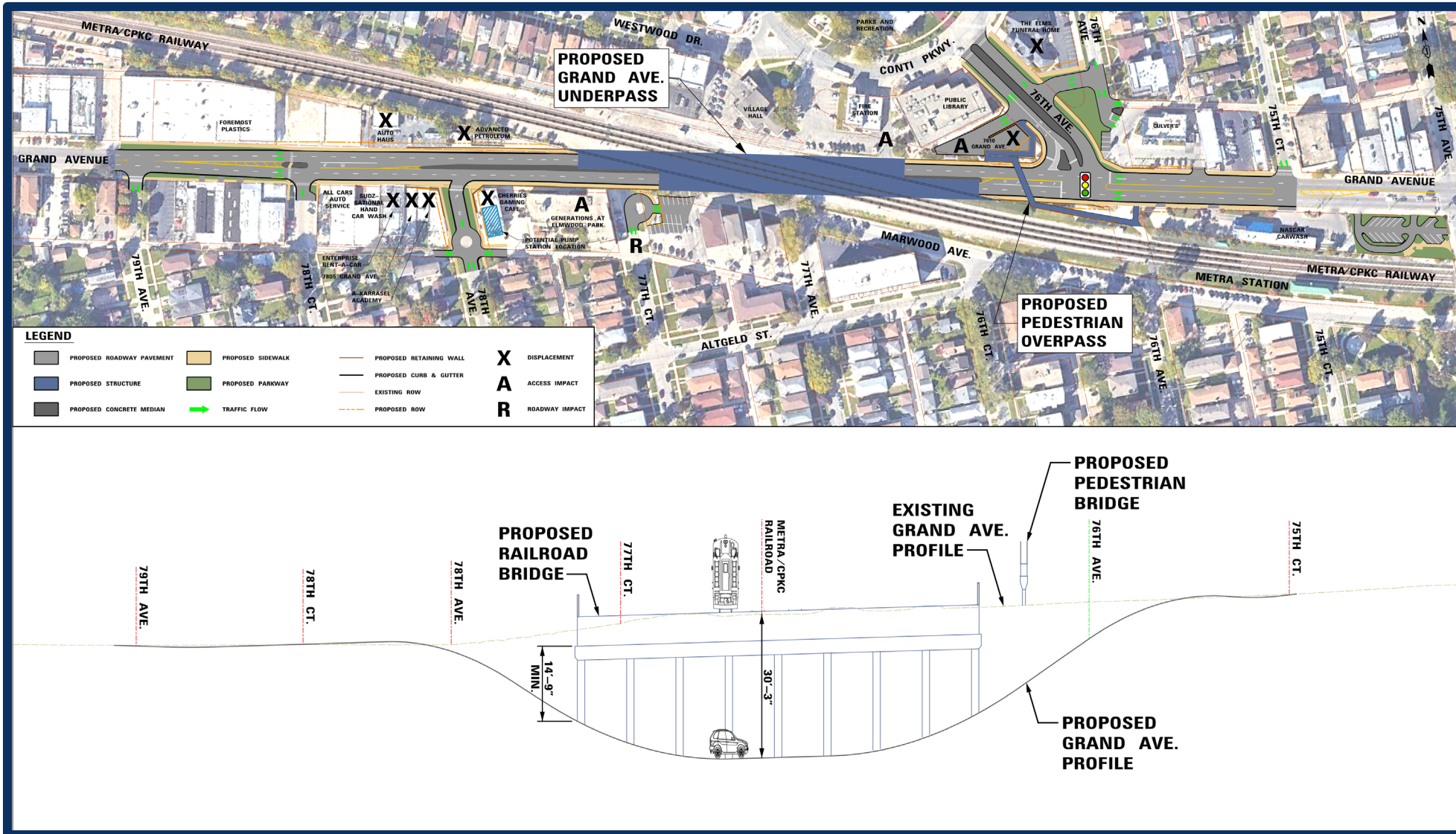




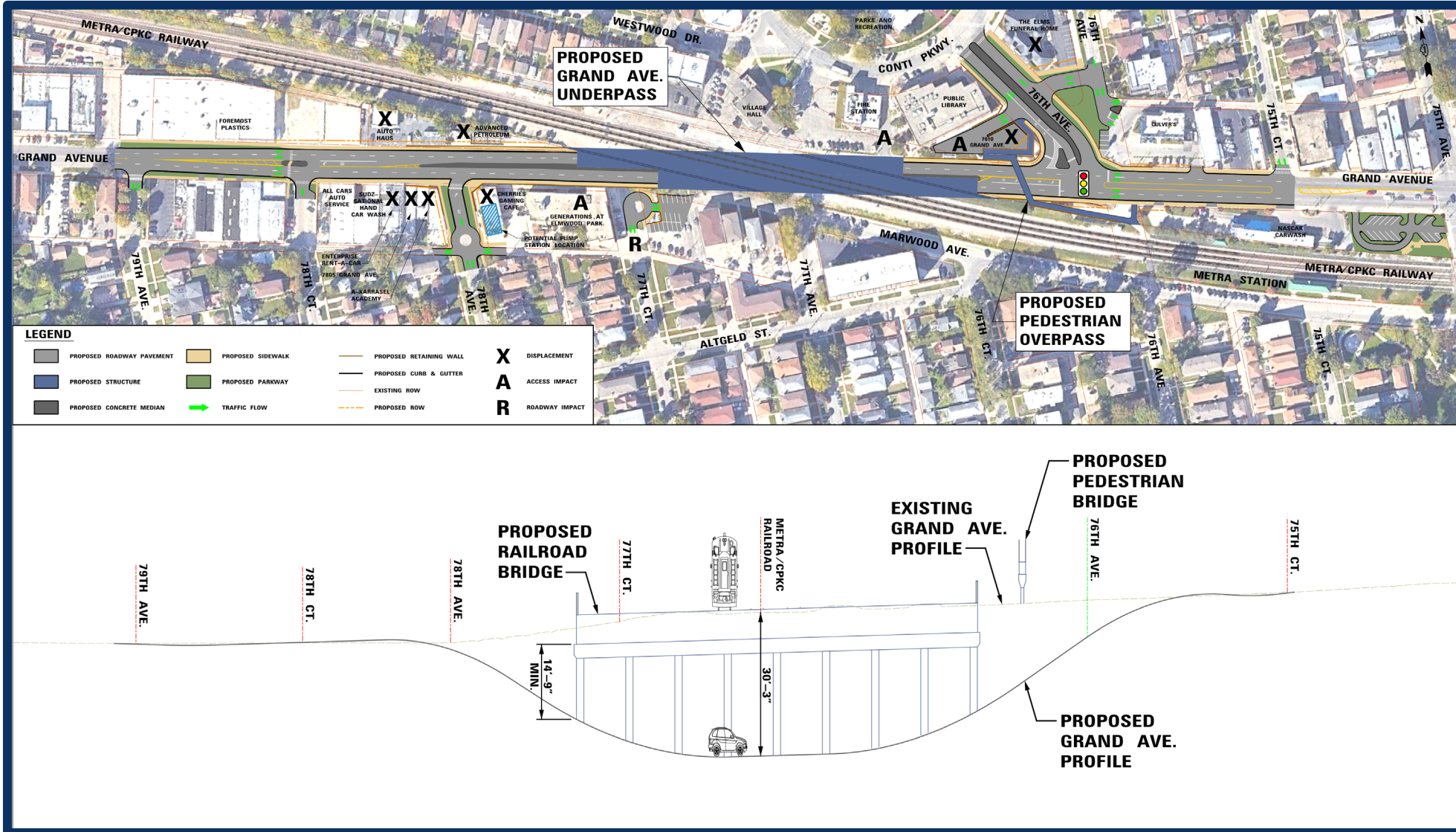
# **PREFERRED ALTERNATIVE**



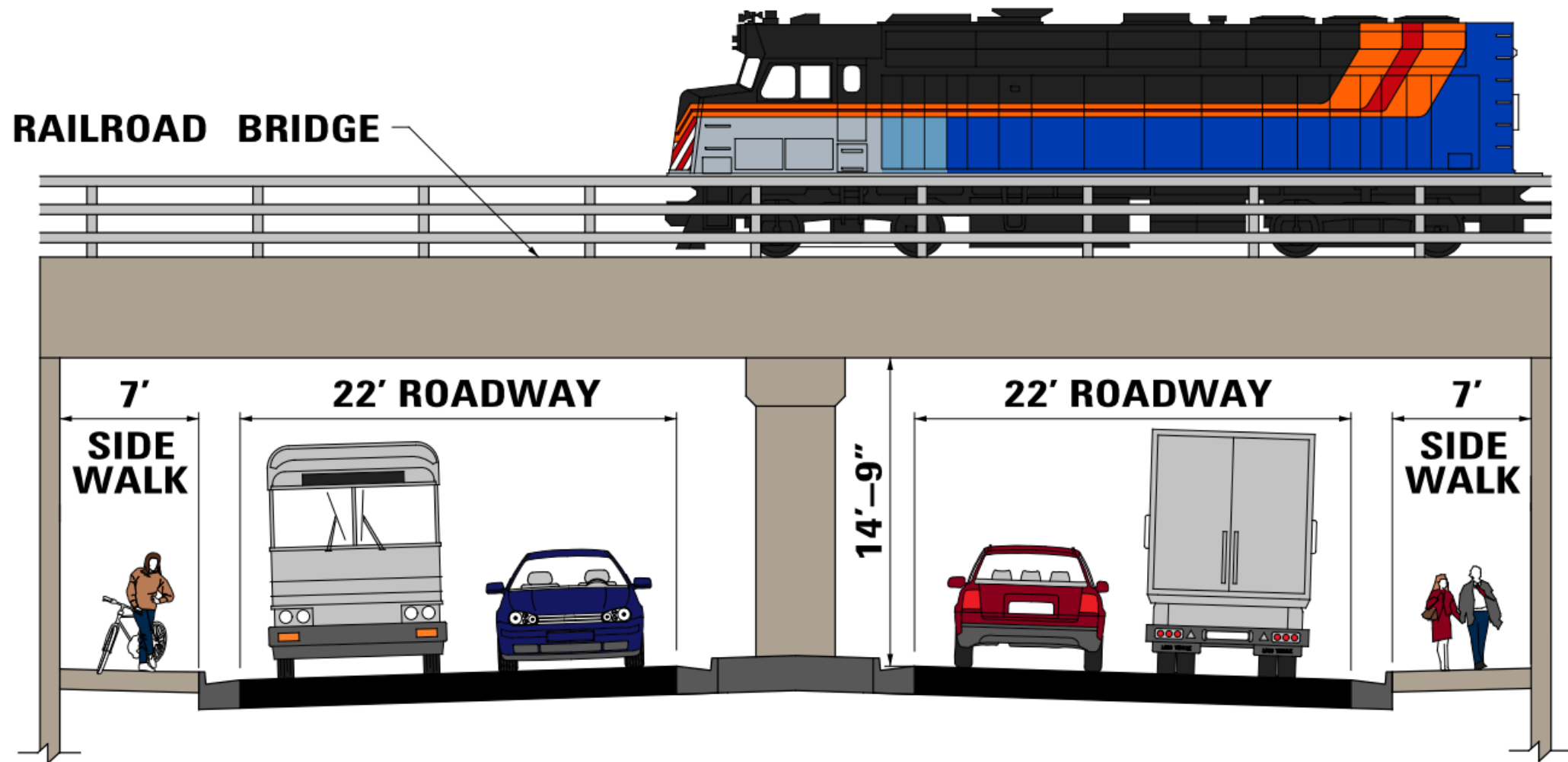
# PREFERRED ALTERNATIVE PLAN AND PROFILE



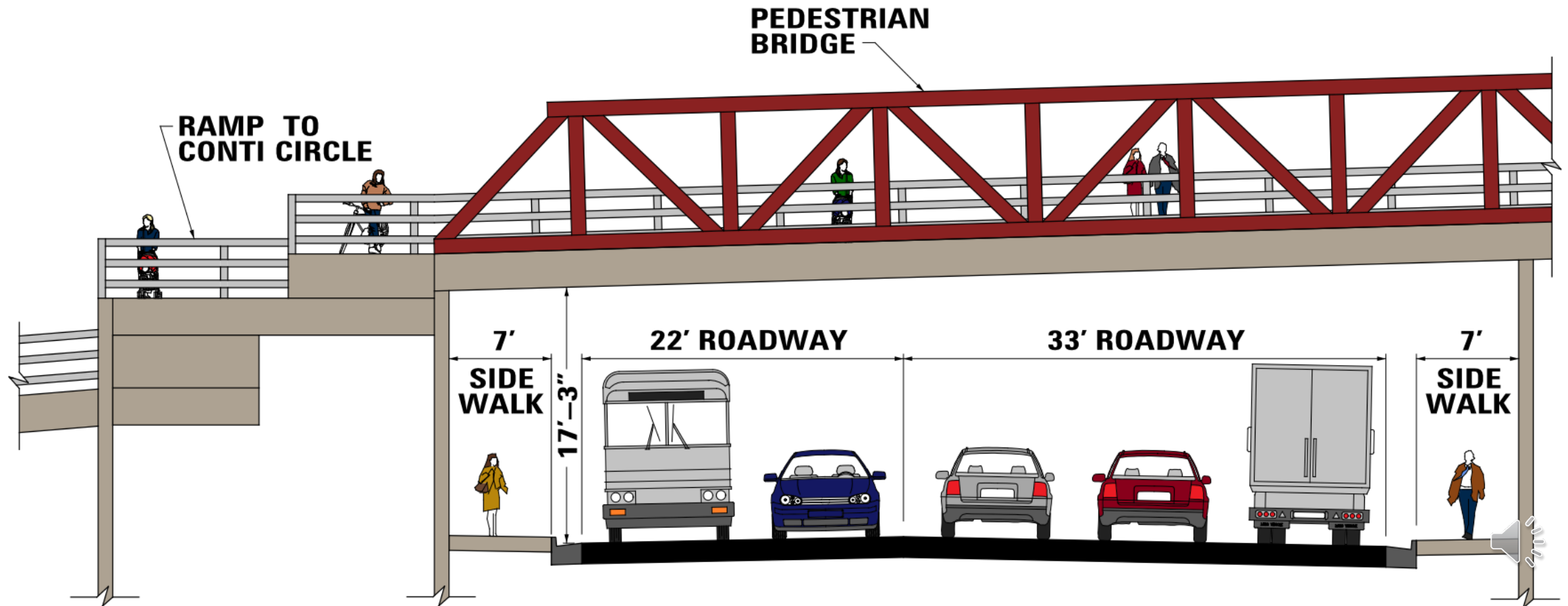
# PREFERRED ALTERNATIVE PLAN AND PROFILE



# PREFERRED ALTERNATIVE CROSS SECTION



# PREFERRED ALTERNATIVE CROSS SECTION



# PREFERRED ALTERNATIVE KISS AND RIDE



The proposed Kiss and Ride Lot will feature:

- Curbside Pace bus stop
- Metra drop off and platform access
- Parking and bike racks
- Green Space and decorative features



# PREFERRED ALTERNATIVE ACCESS CHANGES

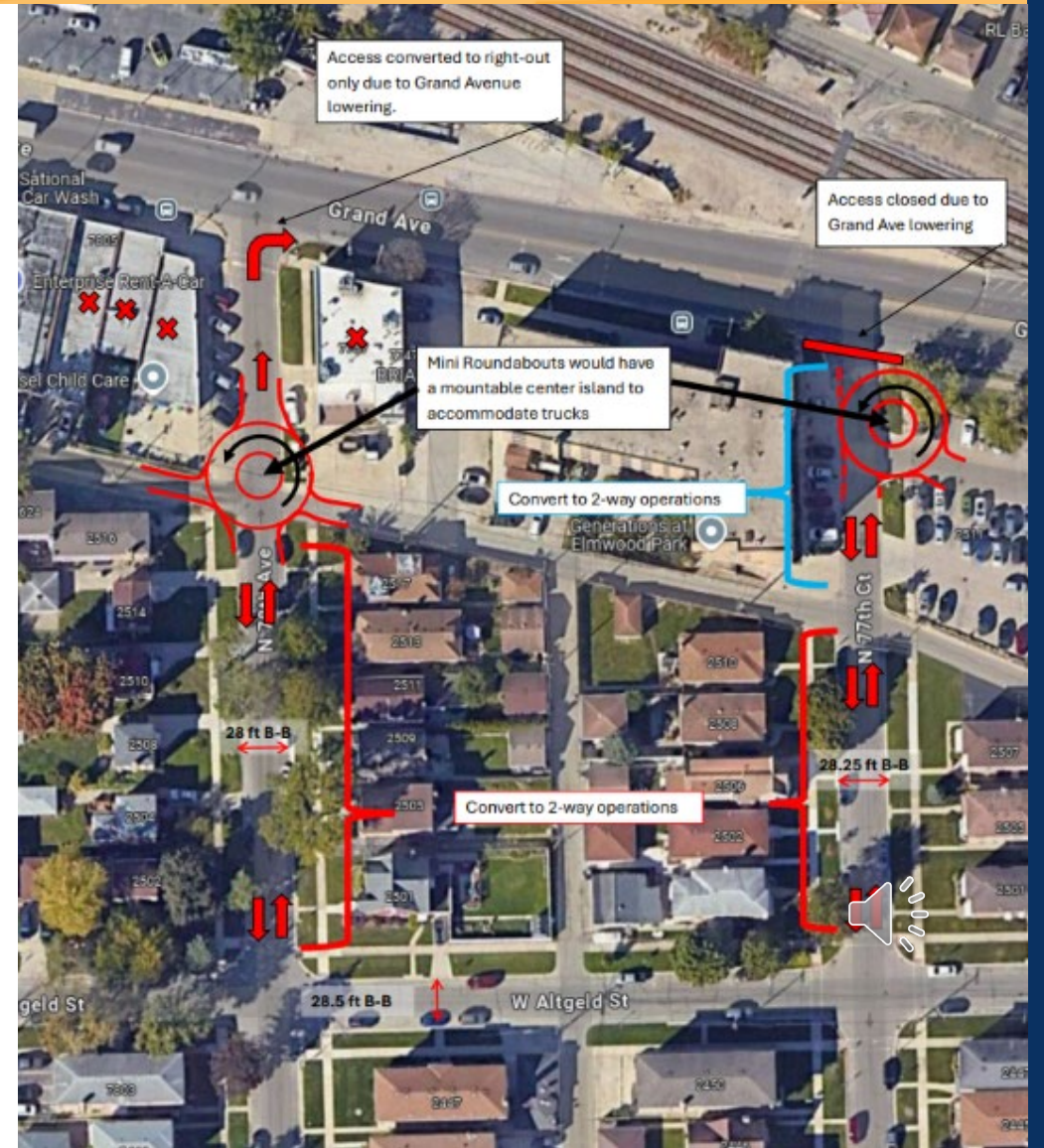


## 78<sup>th</sup> Avenue

- Right out only
- Convert 78<sup>th</sup> Avenue to two-way operations between alley and Altgeld Street

## 77<sup>th</sup> Court

- Access closed at Grand Avenue
- Convert 77<sup>th</sup> Court to two-way operations between Grand Avenue and Altgeld Street



# PREFERRED ALTERNATIVE ACCESS CHANGES

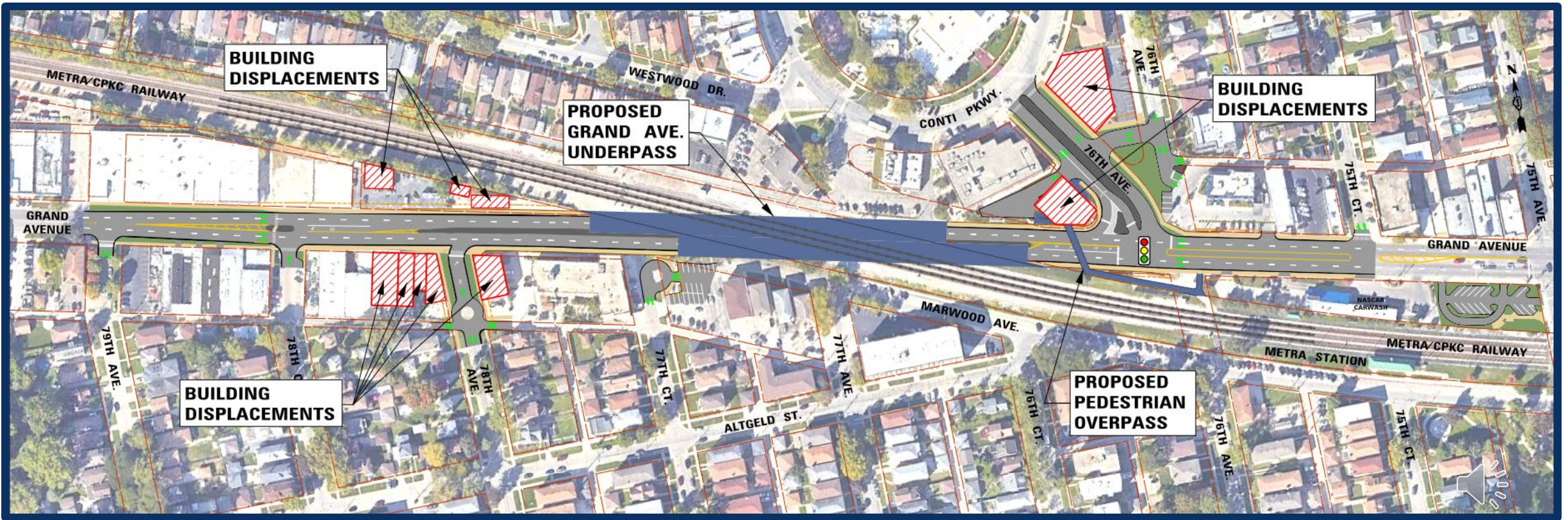


## 76<sup>th</sup> Avenue

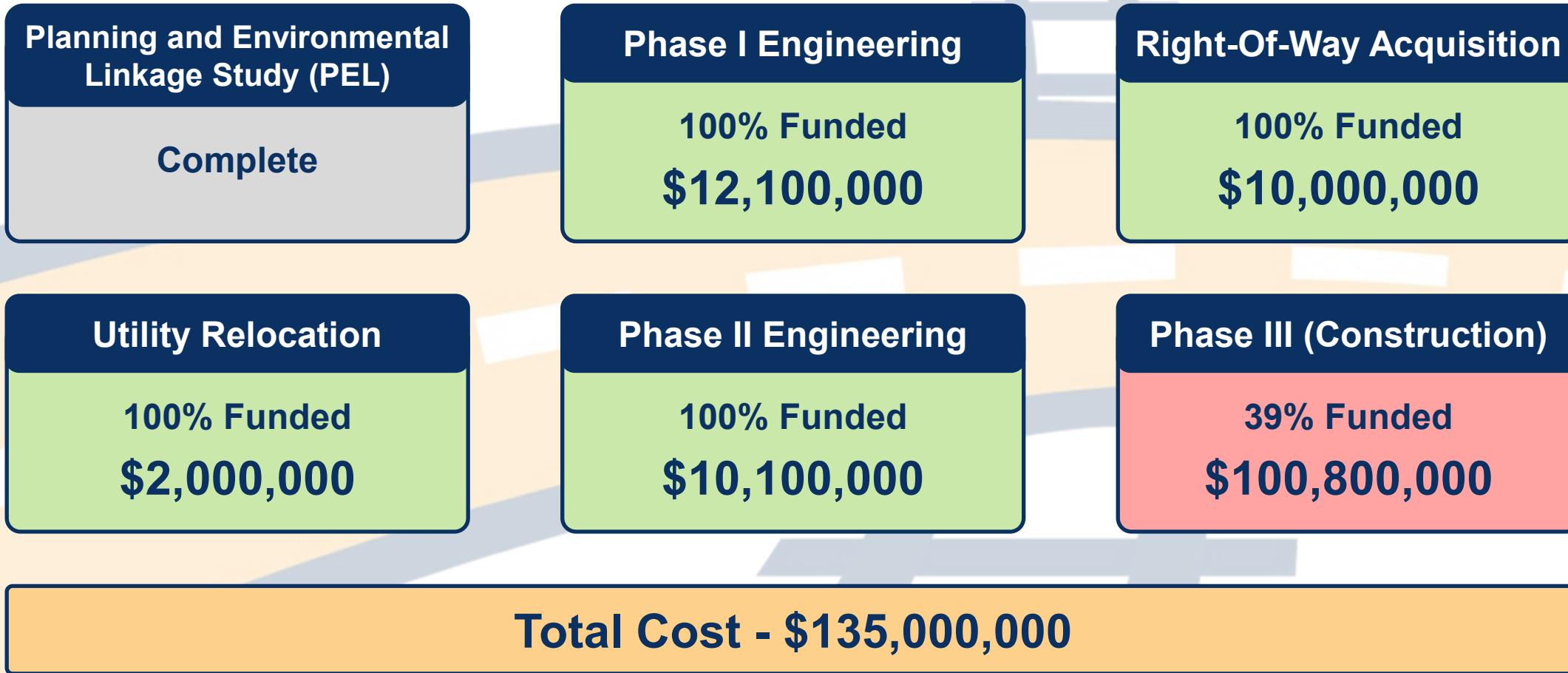
- Traffic signal to remain
- Existing pedestrian crossing replaced with pedestrian overpass
- Access to Culver's modified



# PREFERRED ALTERNATIVE PROPERTY ACQUISITION



# PROJECT COST AND PLANNING





# LAND ACQUISITION AND CONSTRUCTION



# LAND ACQUISITION PROCESS



**Plats**

**Independent Appraisals**

**Offer and Negotiations**

**Eminent Domain**

**Relocation Assistance (25 Residential 7 commercial properties)**



# CONSTRUCTION STAGING: PROPOSED PRELIMINARY BRIDGE CONSTRUCTION SEQUENCE

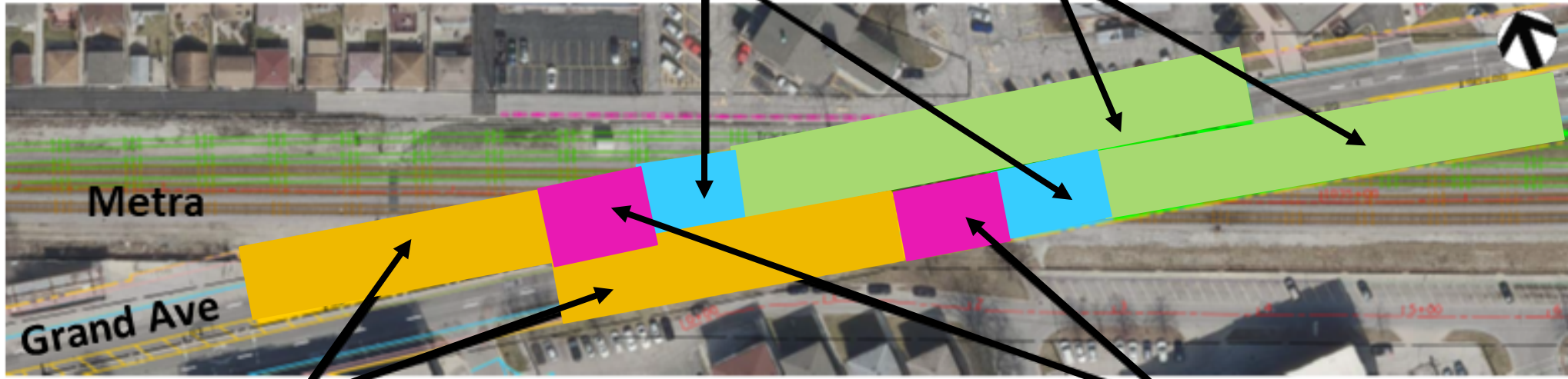


**Stage Two**

- Construct middle 75 ft of bridge
- Relocate middle track onto new Bridge

**Stage One**

- Construct eastern 300 ft of bridge
- Relocate north track onto new Bridge



**Stage Four**

- Construct western 200 ft of bridge
- Move tracks to original alignment

**Stage Three**

- Construct middle 75 ft of bridge
- Relocate south track onto new Bridge

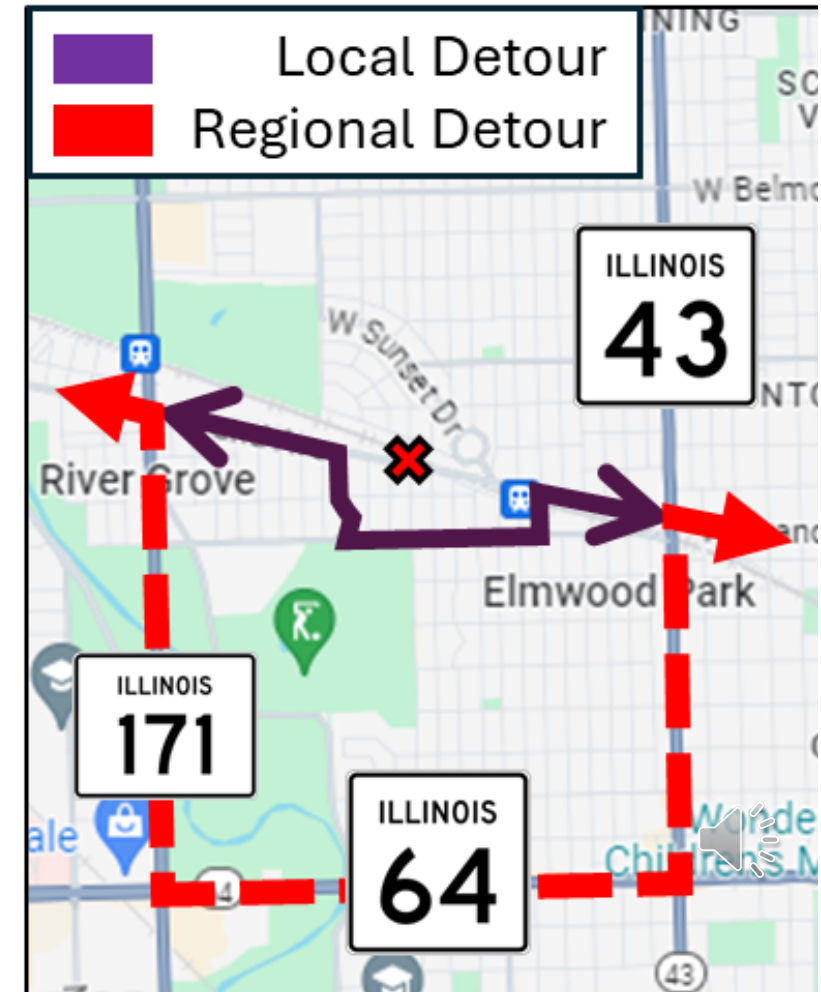


# CONSTRUCTION DETOURS



## Local and regional detours proposed

- Regional detour along IDOT routes
- Local detour along Fullerton Avenue
- Two-year duration estimated (pending construction funding)





# NEXT STEPS





# NEXT STEPS

**View exhibits, ask questions**

**Provide comments BY January 12, 2026**

**Review and incorporate Public Hearing comments**

**Finalize reports, submit to IDOT for approval**

**Phase I approval anticipated Spring 2026**

**Begin Phase II**





# PUBLIC COMMENT SESSION

- Please note that the public comment session will take place at 6:00 p.m. in the exhibit area/gymnasium.
- This will be an opportunity for the public to present their comments verbally and a court reporter will transcribe your comments for the record.





**Your continued involvement and input is important to this project!**

# **Thank you!**



**View project materials at [www.grandgatewayep.com](http://www.grandgatewayep.com)**



**Send us an email at: [info@grandgatewayep.com](mailto:info@grandgatewayep.com)**



**Mail a comment card to:  
Grand Gateway Project  
c/o Metro Strategies Group  
1901 Butterfield Road, Suite 260  
Downers Grove, IL 60515**

