



# GRAND GATEWAY PROJECT

## Public Hearing

December 2025

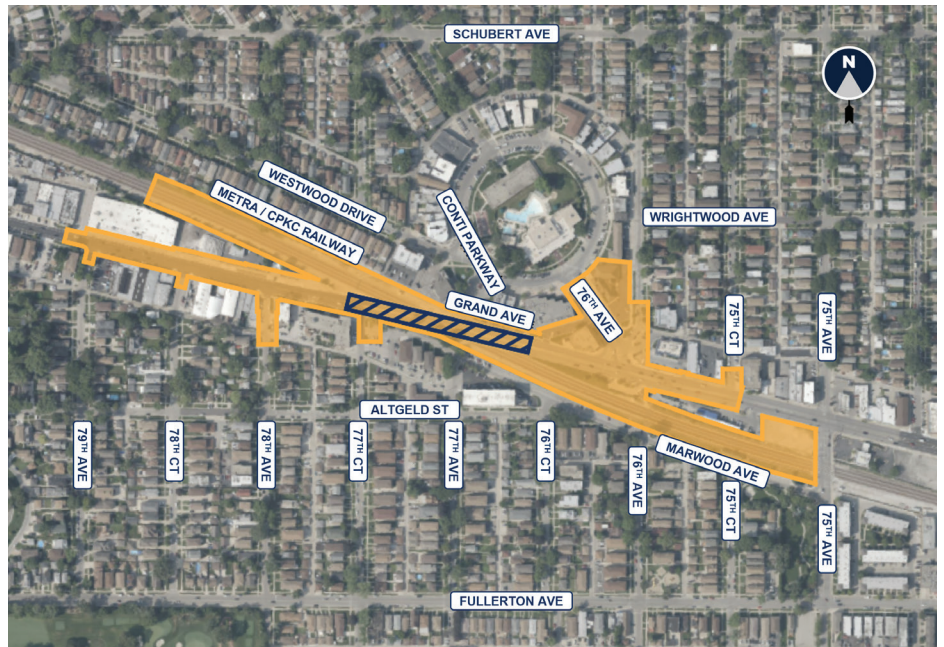
### PROJECT OVERVIEW

The Village of Elmwood Park is working in partnership with the Illinois Department of Transportation (IDOT) and Cook County Department of Transportation and Highways (CCDOTH) to increase safety and mobility where Grand Avenue crosses the Metra/Canadian Pacific Railway. This effort will mitigate the long-standing history of accidents and traffic delays that lower travel efficiency for emergency response vehicles and the community.

The Grand Gateway Grade Separation Project was launched in 2020. The objective of this project is to safely separate rail, vehicle, and pedestrian traffic so that multi-modal needs are met, safety is increased, emergency response vehicles are more efficient, congestion and delays decrease, and vehicle-train conflicts are reduced.

Input from the community and stakeholders has been gathered since 2020 through:

- Four Community Advisory Group Meetings
- Two Public Information Meetings
- Multiple Small Group Meetings
- Letters and Surveys



Currently, the Project is approaching the end of Phase I preliminary engineering, but the Village will continue to engage the public throughout the process.



### WE WANT TO HEAR FROM YOU!

Provide comments by January 12, 2026.

Read more about the project at [www.grandgatewayep.com](http://www.grandgatewayep.com)

