

GRAND GATEWAY - GRADE SEPARATION STUDY

*Community Advisory Group (CAG) Meeting #3
December 7, 2021*



- 
- 1. Introductions**
 - 2. Study Recap**
 - 3. Project Review**
 - 4. Schedule**
 - 5. Alternatives Analysis**
 - 6. Breakout Session**
 - 7. Next Steps**
 - 8. Public Information Meeting #2 Overview**
 - 9. Discussion**



INTRODUCTIONS

INTRODUCTIONS

Project Team



KNIGHT

Engineers & Architects

Clay Shipley, *Vice President*
Scott Brejcha, *Senior Project Manager*

METRO STRATEGIES
group

Tammy Wierciak, *Principal*
Elli Cosky, *Senior Project Manager*



Joseph Chiczewski, *President*



GSG CONSULTANTS, INC.
Engineers & Scientists

Dawn Edgell, *Project Manager*



ALTUSWORKS INC.

Chelsea Medek, *Architect*

INTRODUCTIONS

CAG Members



Federal Transit Administration

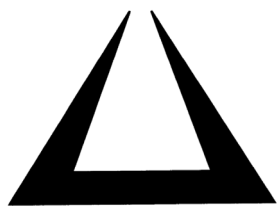


Village of Elmwood Park

Village of Elmwood Park
 Elmwood Park Fire Department
 Elmwood Park Police Department
 Grand Corridor Chamber of Commerce
 Christopher B. Burke Engineering (Village Engineer)
 Storino, Ramello & Durkin (Village Attorney)



Department of Transportation and Highways



Metropolitan Water Reclamation District of Greater Chicago



Regional Transportation Authority



U.S. Department of Transportation
 Federal Highway Administration



Illinois Department of Transportation



pace



COMMUNITY ADVISORY GROUP (CAG) *Goals*



Actively seek participation from CAG members



Respectfully review and discuss all concerns and project elements



Identify possible options and alternatives to meet project needs



Evaluate impacts associated with each alternative



Reach consensus on a preferred alternative



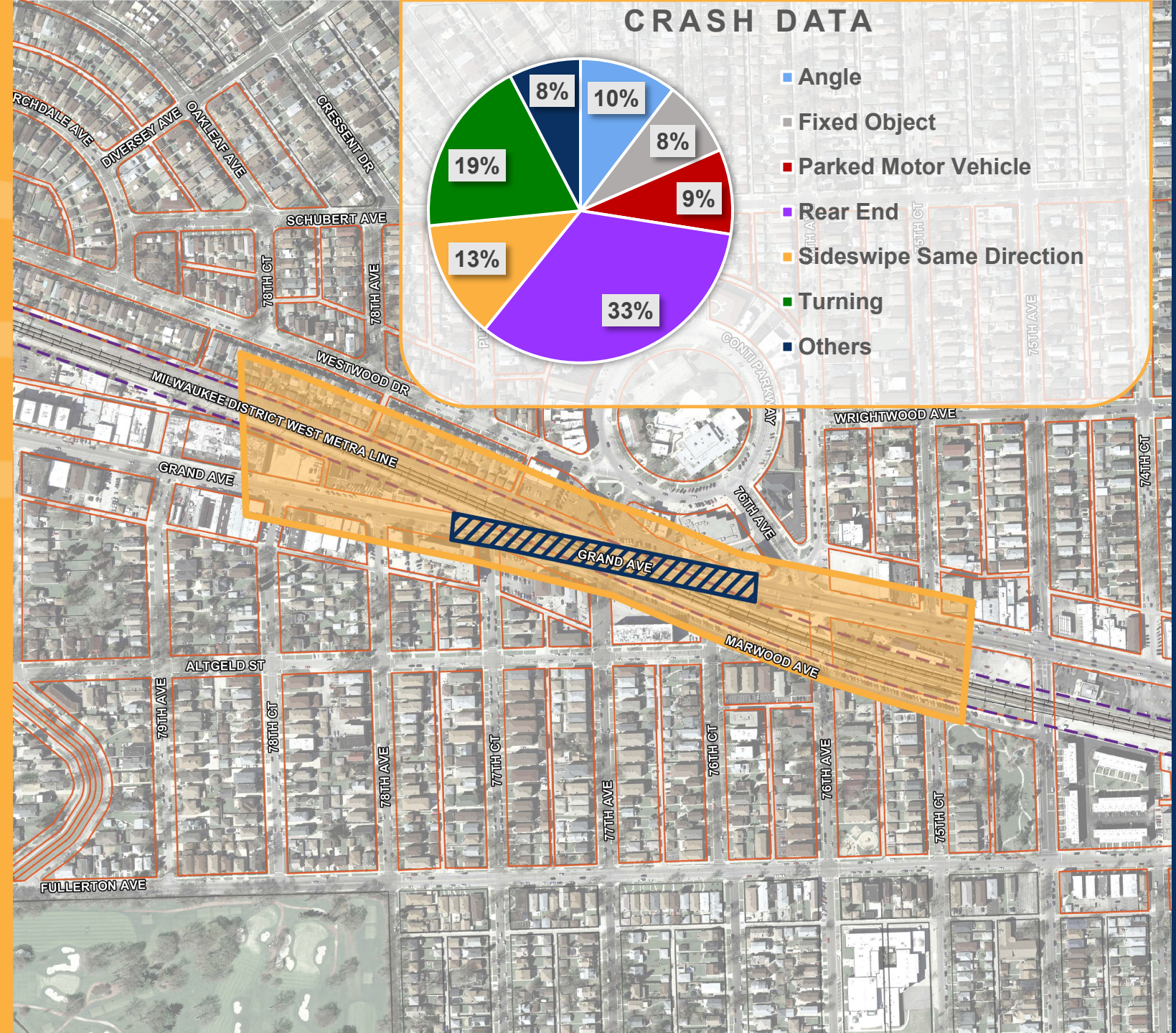
COMMUNITY ADVISORY GROUP MEETING #1

CAG #1

Held virtually:
July 23, 2020

Agenda:

- CAG Overview
- Project Background
- Crash Data
- Study Area
- Benefits





COMMUNITY ADVISORY GROUP MEETING #2

CAG #2

Held virtually:
February 18, 2021

Agenda:

- Project Review
- PEL Study
- Draft Problem Statement
- Draft Purpose and Need
- Workshop: Criteria for Alternative Analysis
- Public Information Meeting #1 Overview

DRAFT

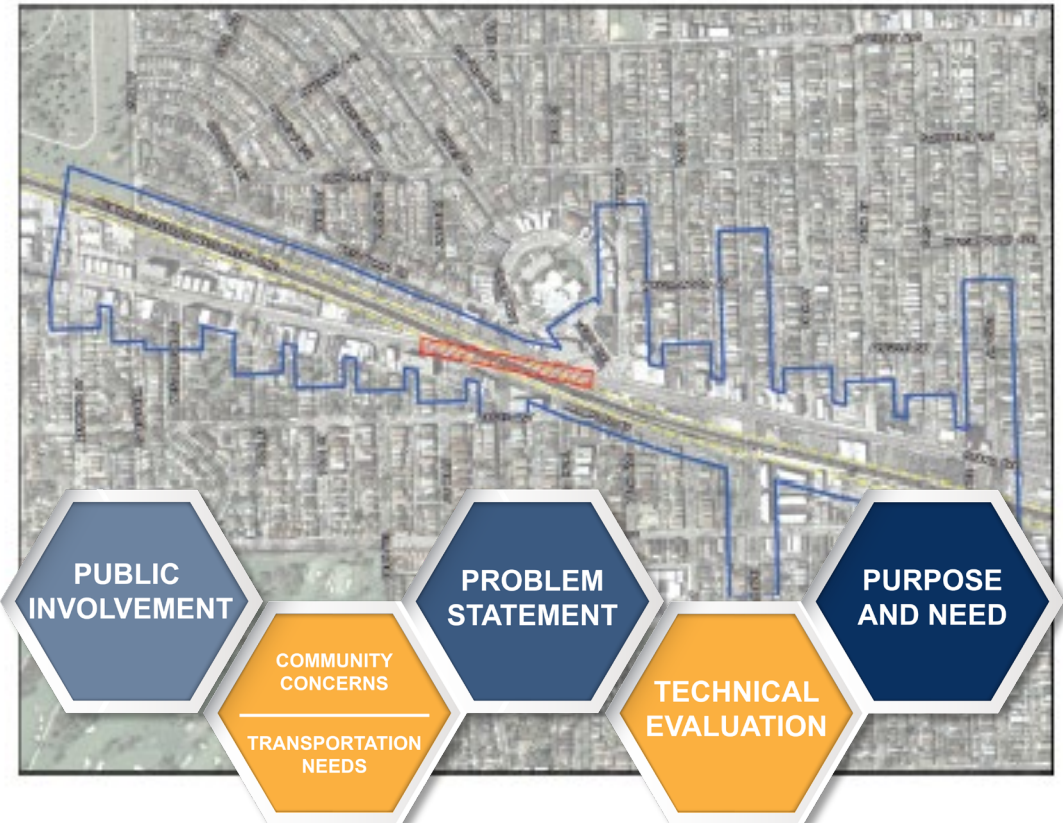
Grand Gateway

Purpose and Need

Grand Avenue at Metra/Canadian Pacific Railroad

November 2020

FAU 1376
Cook County
Elmwood Park
Job No. P-91-029-17





Public Information Meeting #1

PUBLIC INFORMATION MEETING #1



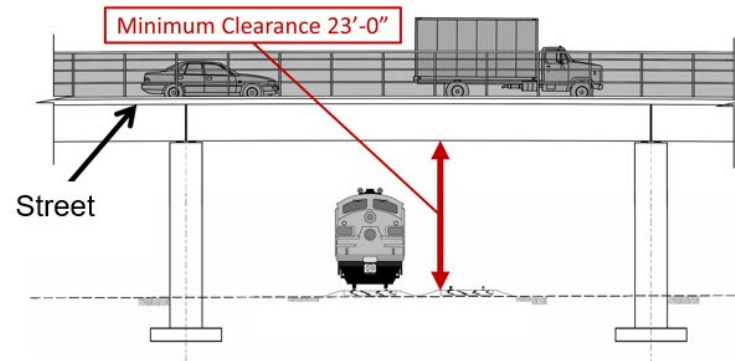
Held virtually:
April 21, 2021

Participants:
100

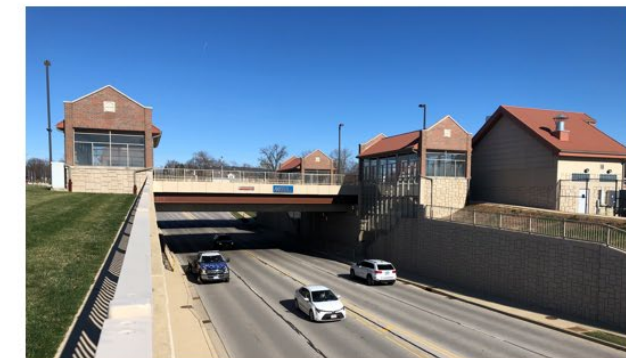
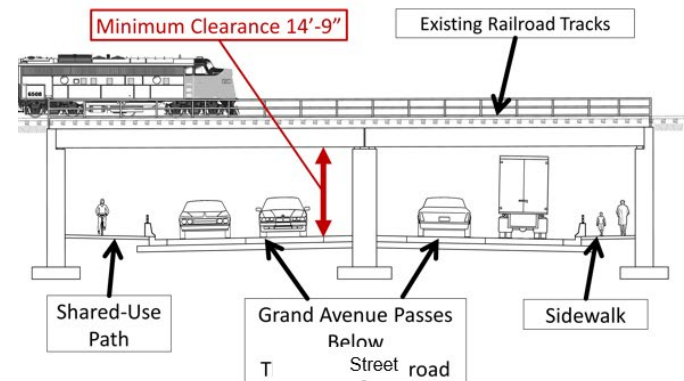
Agenda:

- Project Overview
- PEL Study
- Draft Problem Statement
- Draft Purpose and Need
- Breakout Sessions

Roadway Overpass Example



Roadway Underpass Example



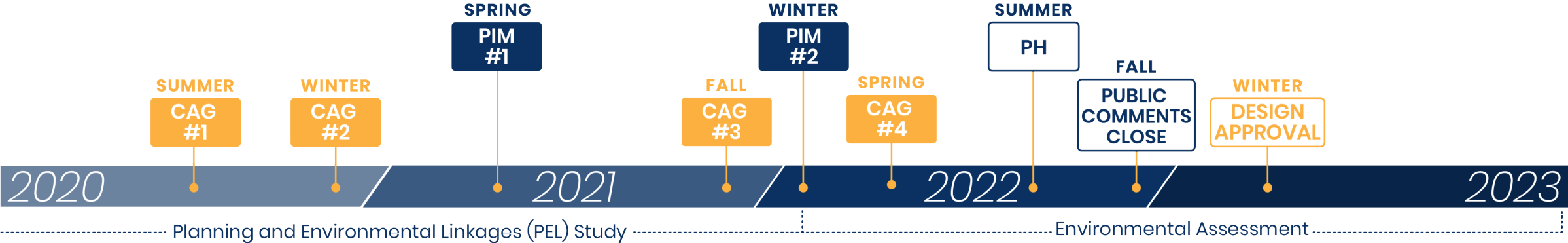


PROJECT REVIEW

PROJECT AREA MAP



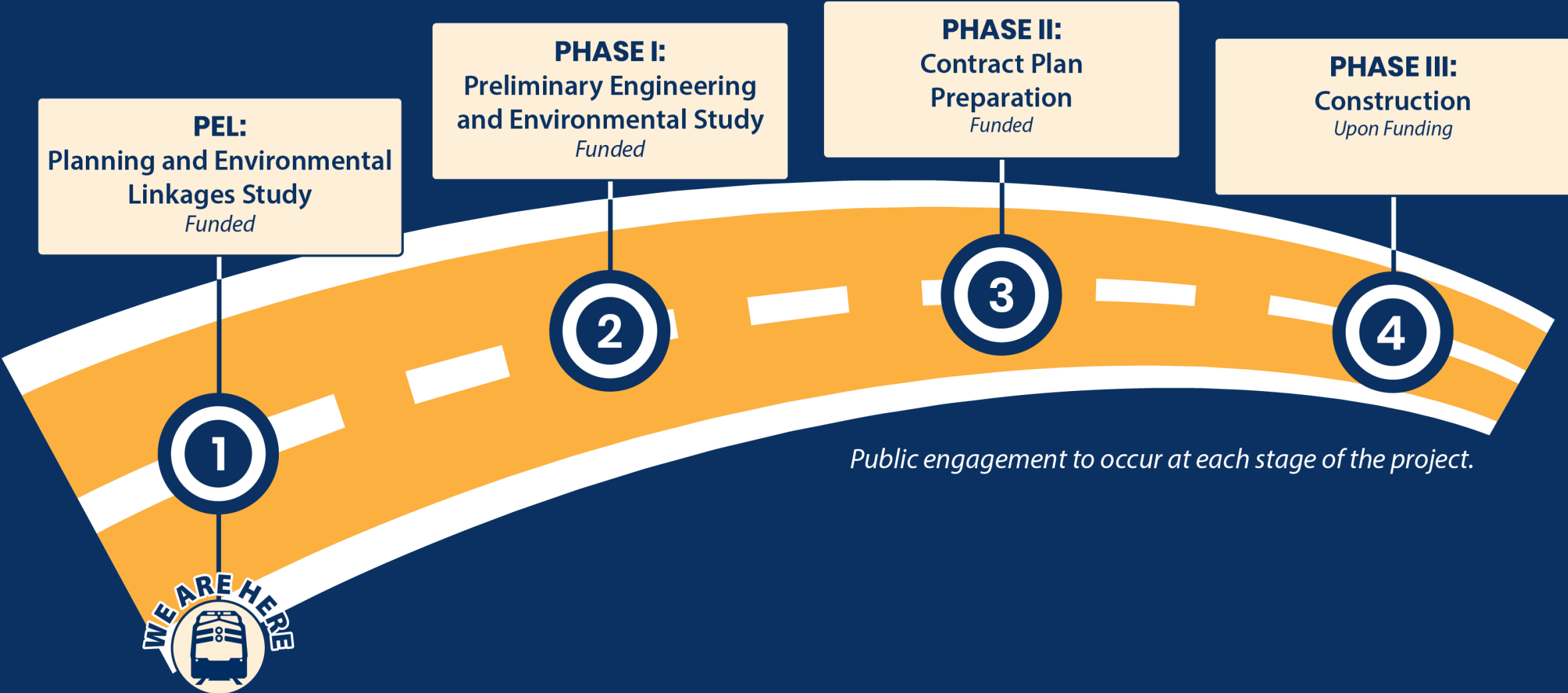
PHASE I STUDY TIMELINE



CAG	Community Advisory Group Meeting	PUBLIC COMMENTS CLOSE	Targeted Public Comments Closing
PIM	Public Information Meeting	DESIGN APPROVAL	Targeted Design Approval
PH	Public Hearing		

Subject to change

PROJECT DEVELOPMENT PROCESS

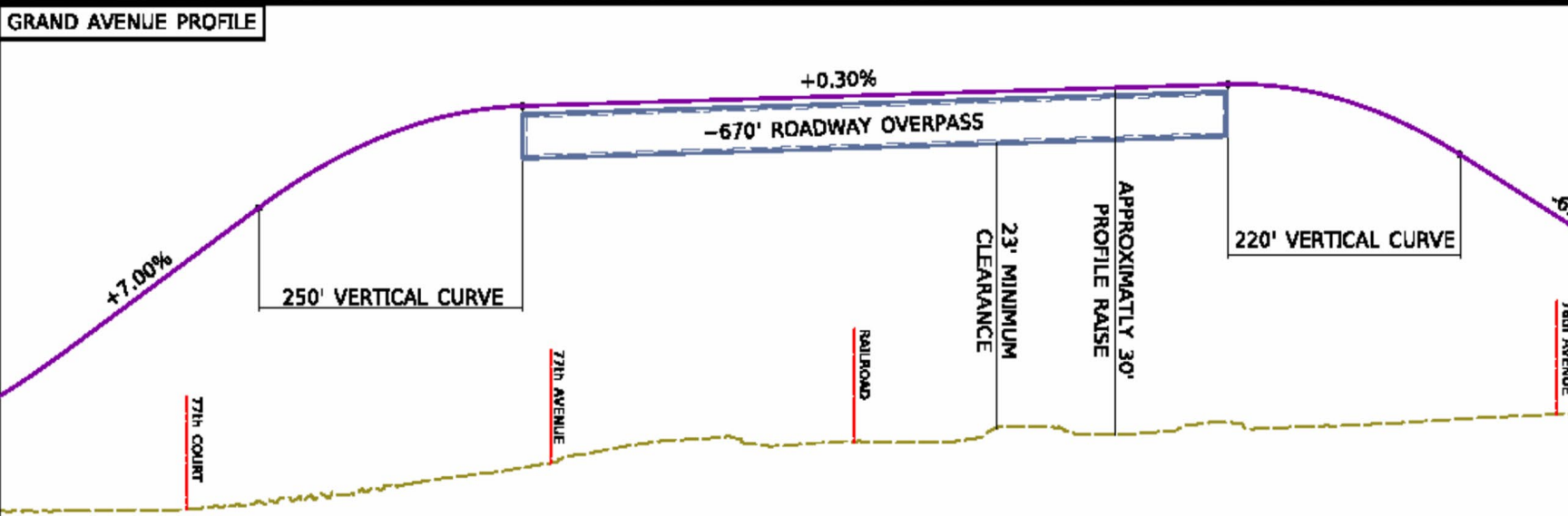
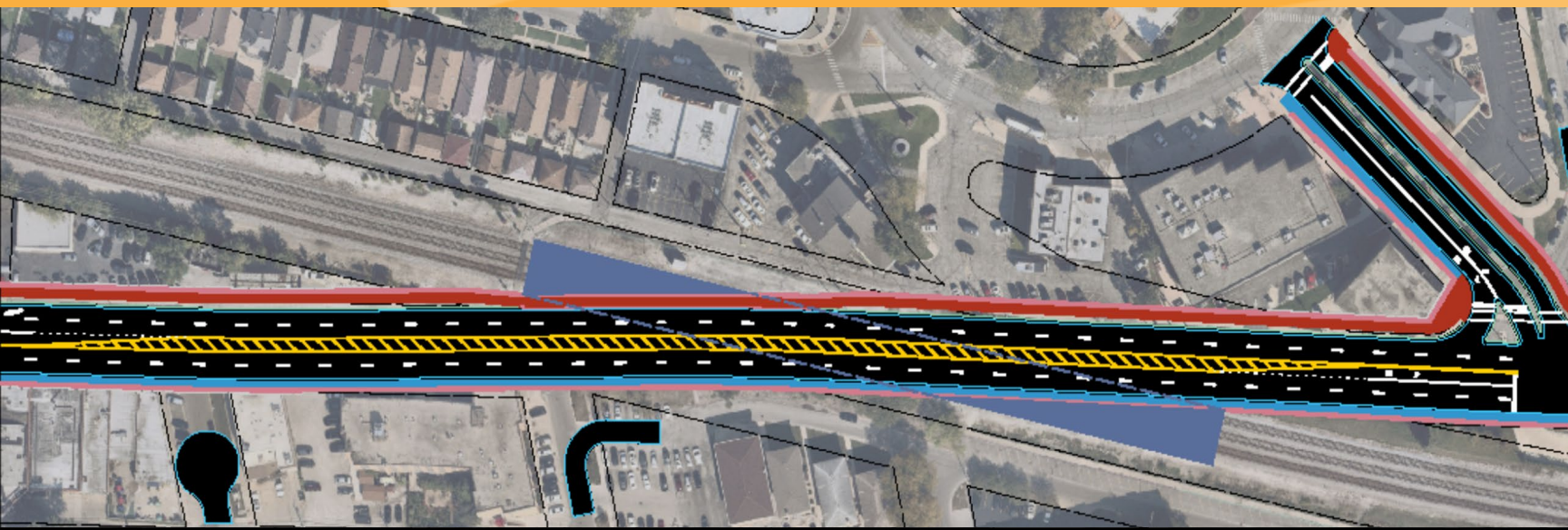




ALTERNATIVES ANALYSIS

ALTERNATIVE #1

Grand Avenue Over Railroad

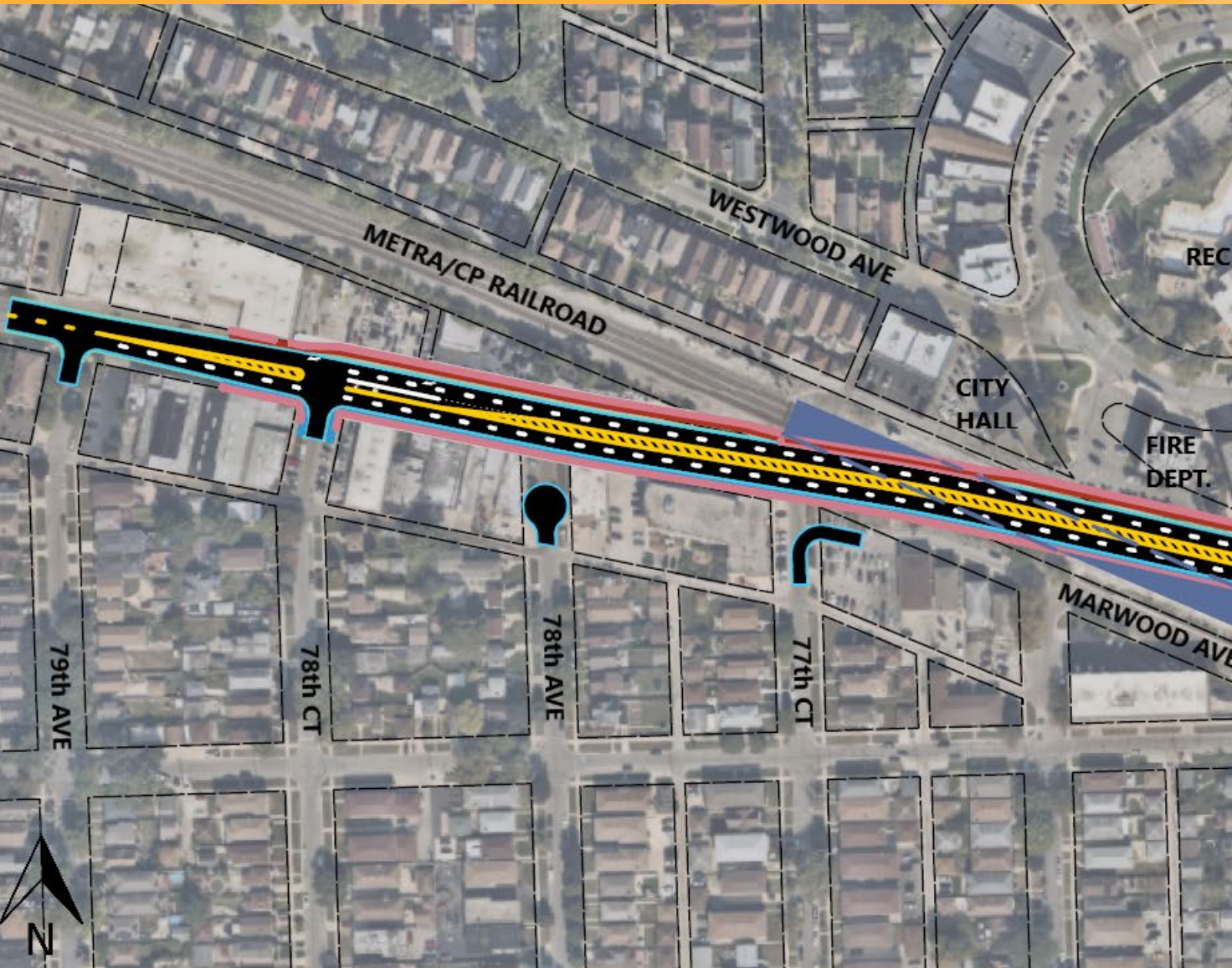


DESIGN:

- Grand Avenue is reconstructed from 79th Avenue to 75th Avenue
- Metra operations are maintained
- Raises Grand Avenue 30 feet over tracks
- 76th Avenue also raised 17 feet
- 12-foot travel lanes
- 7-foot sidewalk along south side of Grand Avenue and 10-foot shared use path along north Grand Avenue

ALTERNATIVE #1

Grand Avenue Over Railroad

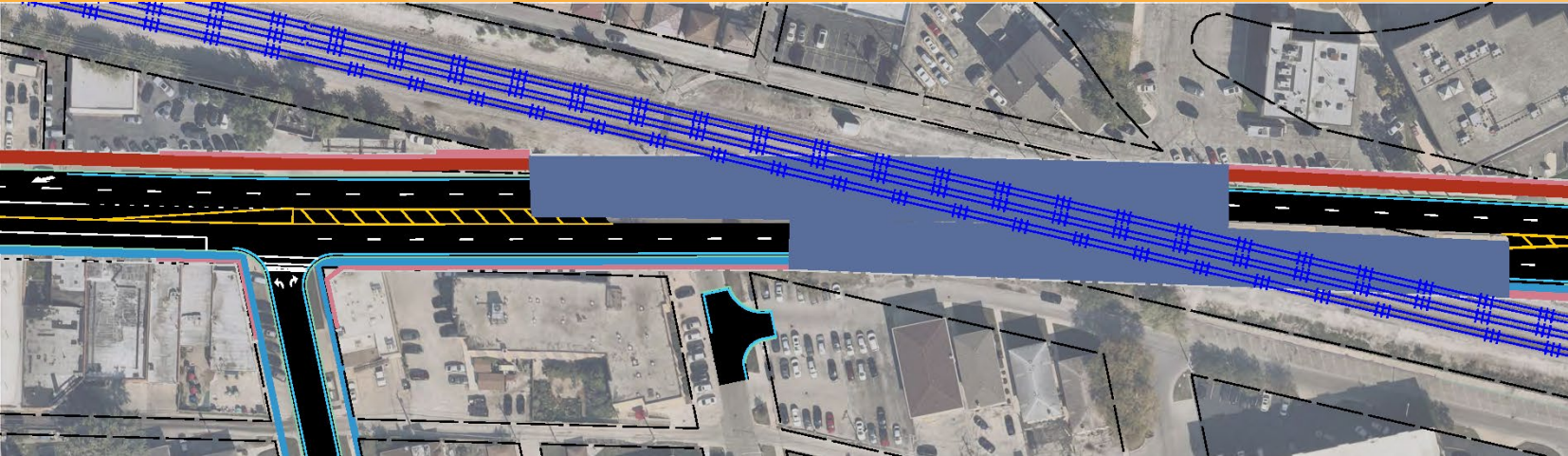


ISSUES:

- Access to 77th Court is removed
- Access from Grand Avenue to Fire Station and Library is removed
- Generation's retirement building
- 2 residential displacements
- 11 commercial displacements
- 47 parking spaces are impacted
- Access to 78th Court is removed
- Access to 77th Avenue is removed
- Access to Elmwood Park Fire Station and Library is removed from Grand Avenue
- Access to Metra pick-up/drop-off is impacted

ALTERNATIVE #2

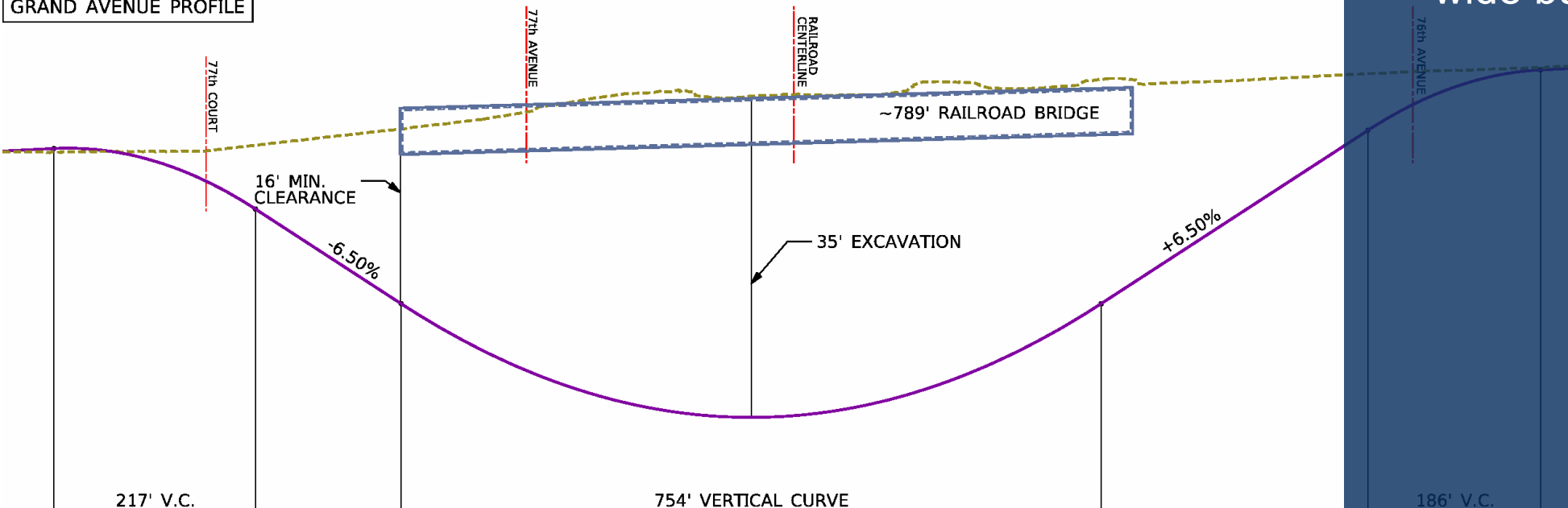
Grand Avenue Under Railroad



DESIGN:

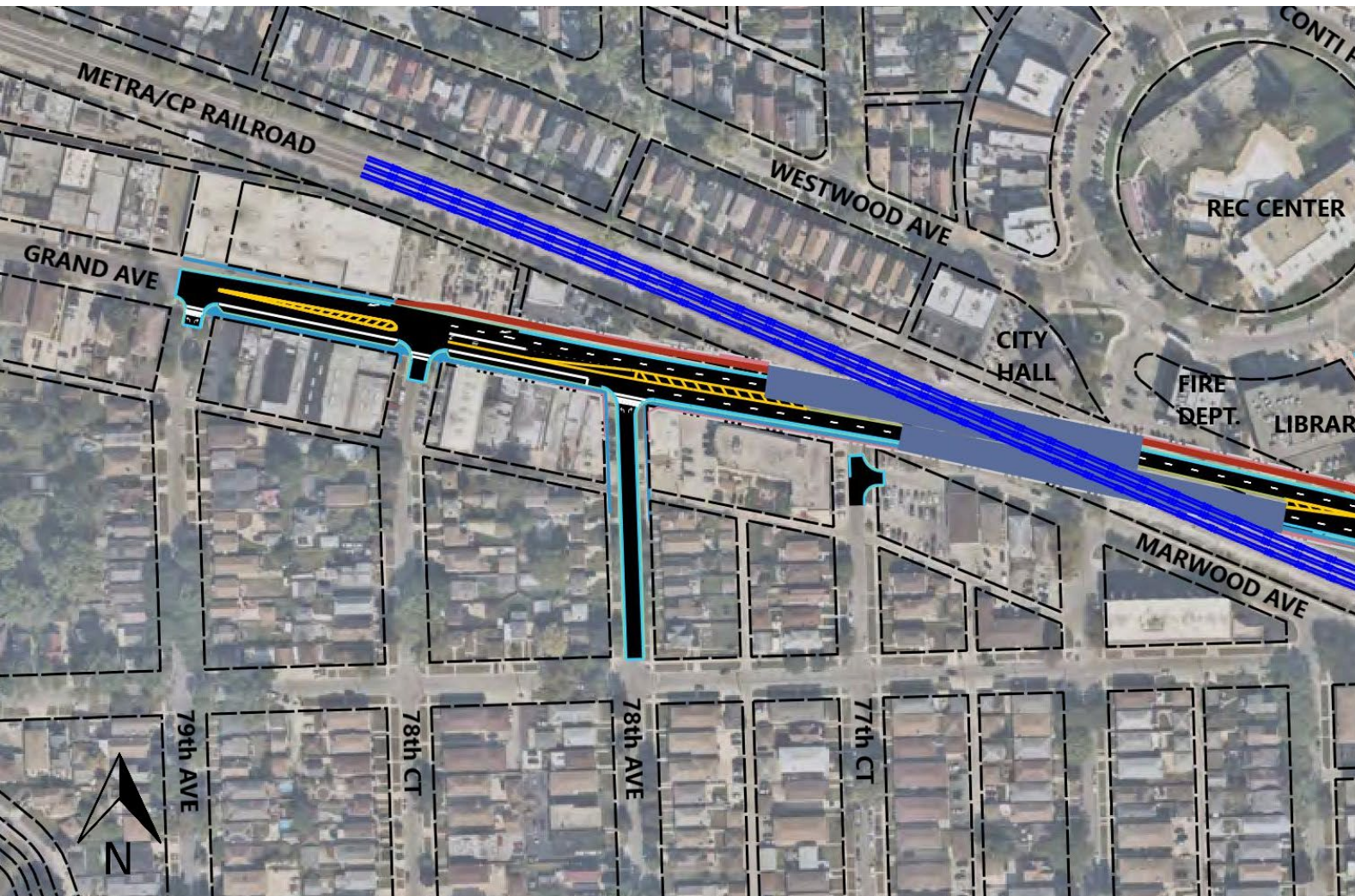
- Grand Avenue is reconstructed from 79th Avenue to 75th Court
- 12-foot travel lanes
- 5-foot sidewalk with 2-foot-wide buffer

GRAND AVENUE PROFILE



ALTERNATIVE #2

Grand Avenue Under Railroad

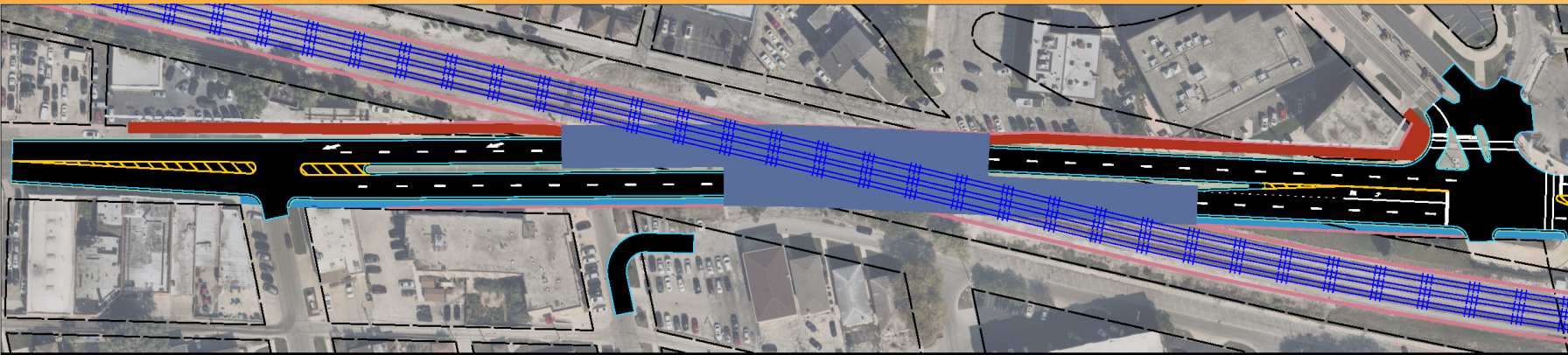


ISSUES:

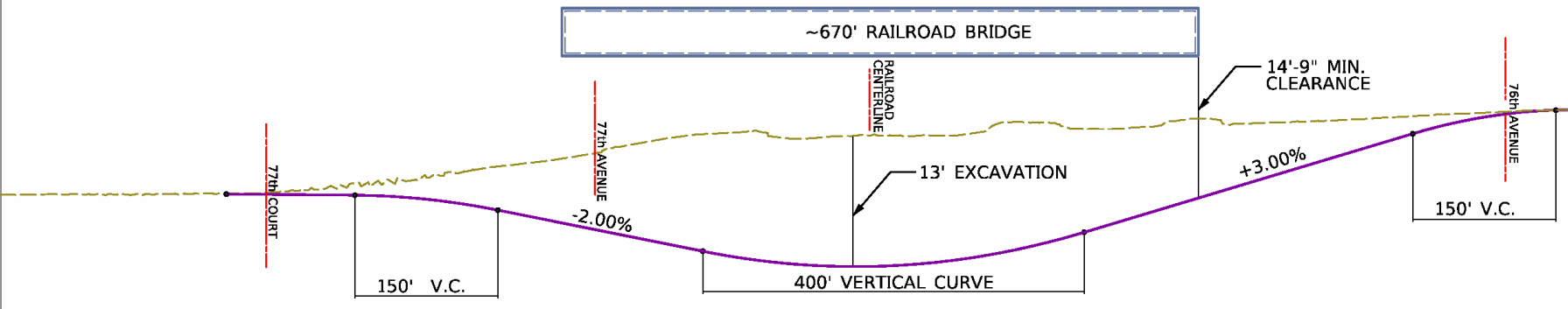
- 2 residential displacements
- 4 commercial displacements
- Access to Grand Avenue from 77th Court is removed
- Access to Elmwood Park Fire Station and Library is removed from Grand Avenue
- 29 parking spaces are impacted
- Metra operations are impacted
- Metra station is relocated
- Access to car wash is removed

ALTERNATIVE #3

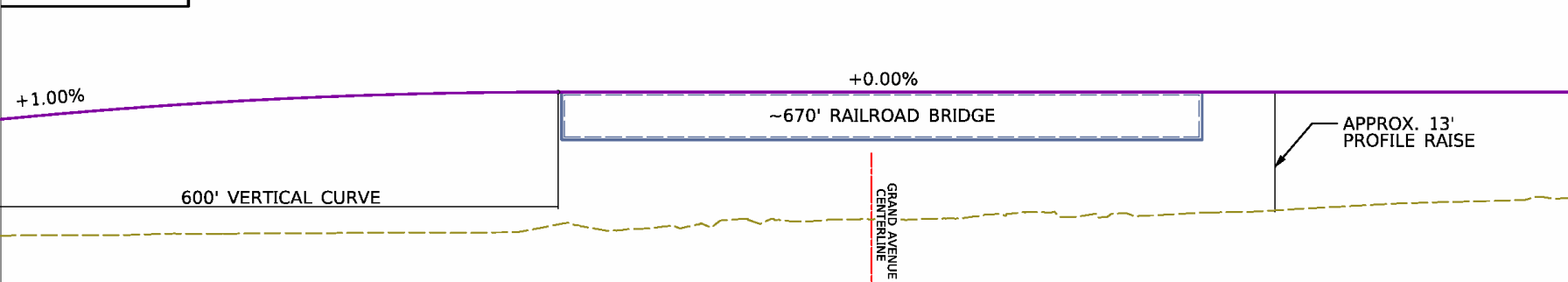
Combination of Lowering Grand Avenue & Raising Railroad



GRAND AVENUE PROFILE



RAILROAD PROFILE



DESIGN:

- Grand Avenue is reconstructed from 78th Court to 76th Avenue
- 12-foot travel lanes
- 7-foot sidewalk south side of Grand Avenue and 5 foot shared-use path along the north side of Grand Avenue
- Metra operations will be impacted
- Metra station will be reconstructed

ALTERNATIVE #3

Combination of Lowering Grand Avenue & Raising Railroad

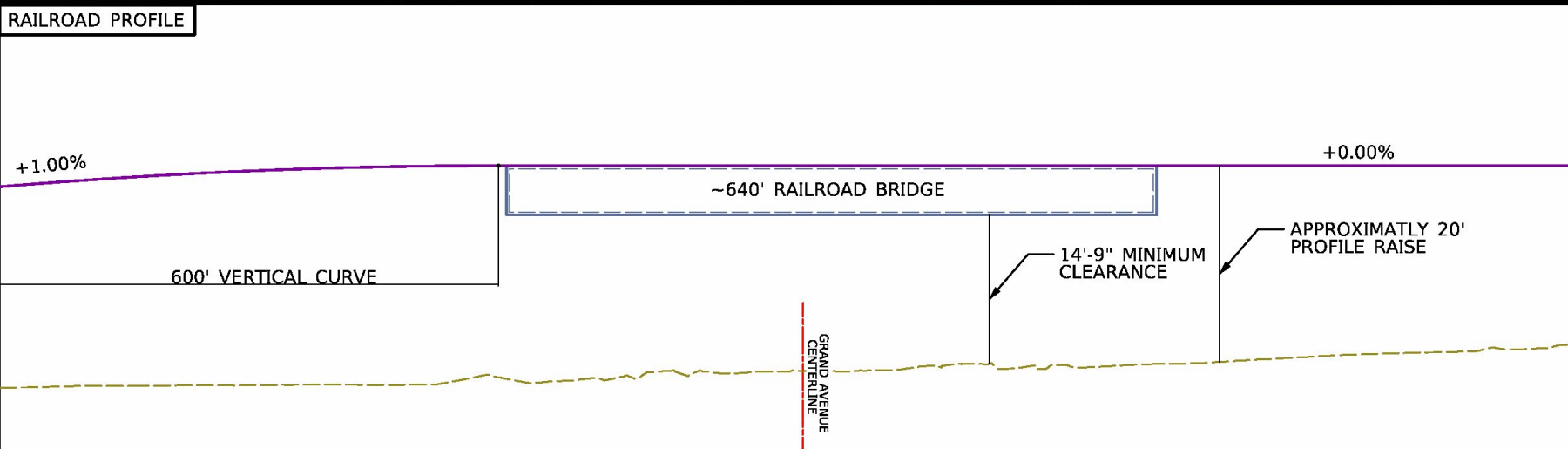
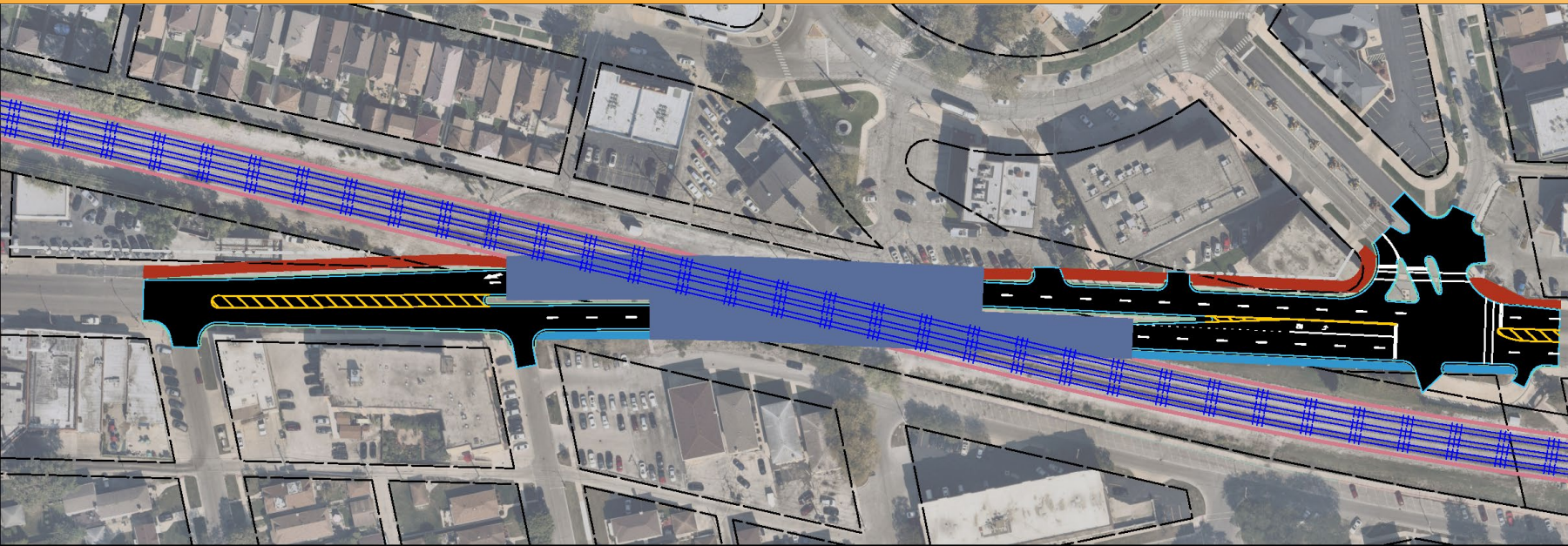


ISSUES:

- 1 residential displacements
- 3 commercial displacements
- Access to 77th Avenue is removed
- Access to Elmwood Park Fire Station and Library is removed from Grand Avenue
- 19 parking spaces are impacted
- Access to Metra pick-up/drop-off is impacted

ALTERNATIVE #4

Railroad Over Grand Avenue

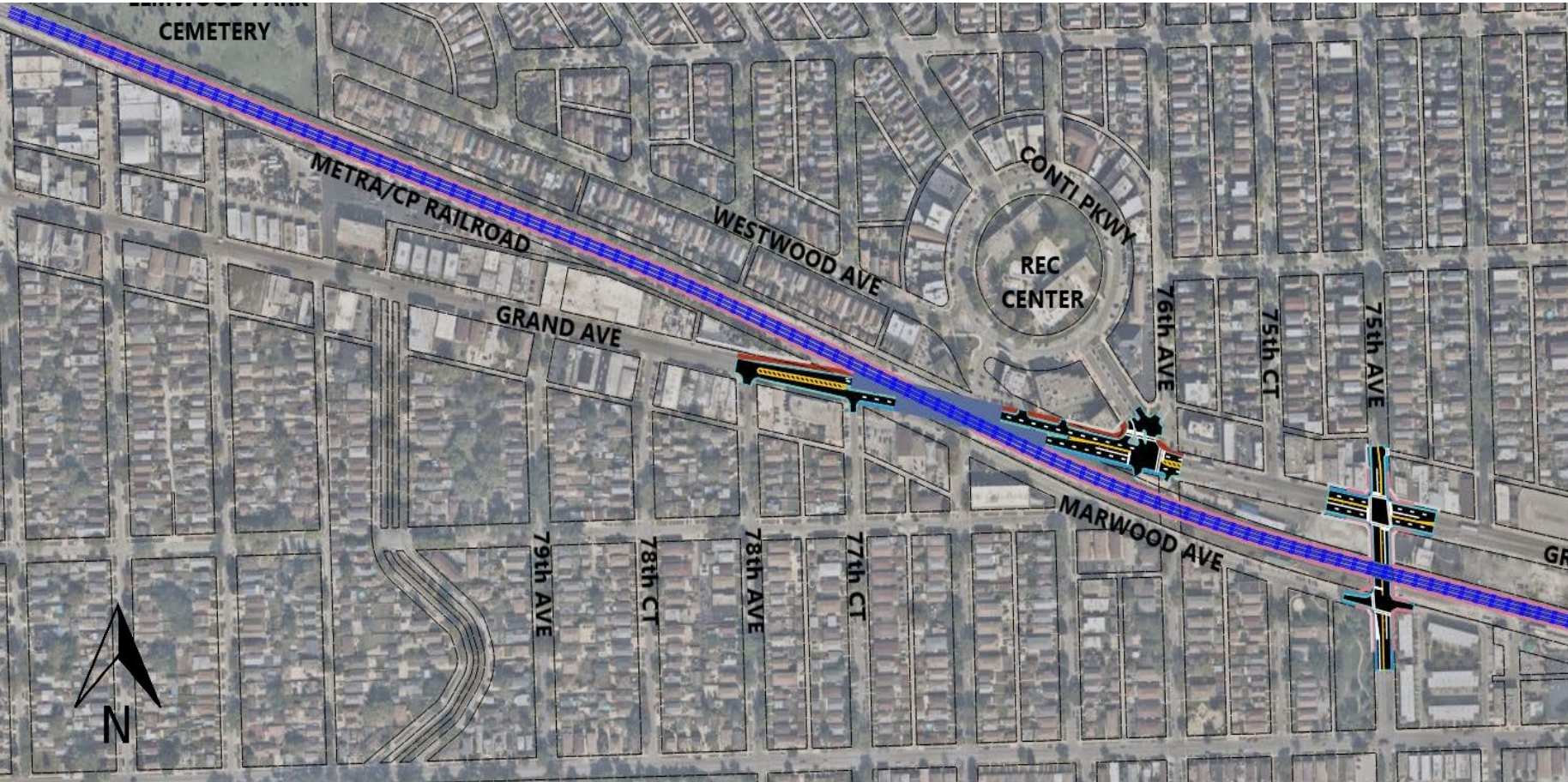


DESIGN:

- Grand Avenue is reconstructed from 78th Avenue to 76th Avenue
- 12-foot travel lanes
- 7-foot sidewalk south side of Grand Avenue and 10 foot shared-use path along the north side of Grand Avenue
- Metra operations will be impacted
- Metra station will be reconstructed

ALTERNATIVE #4

Railroad Over Grand Avenue

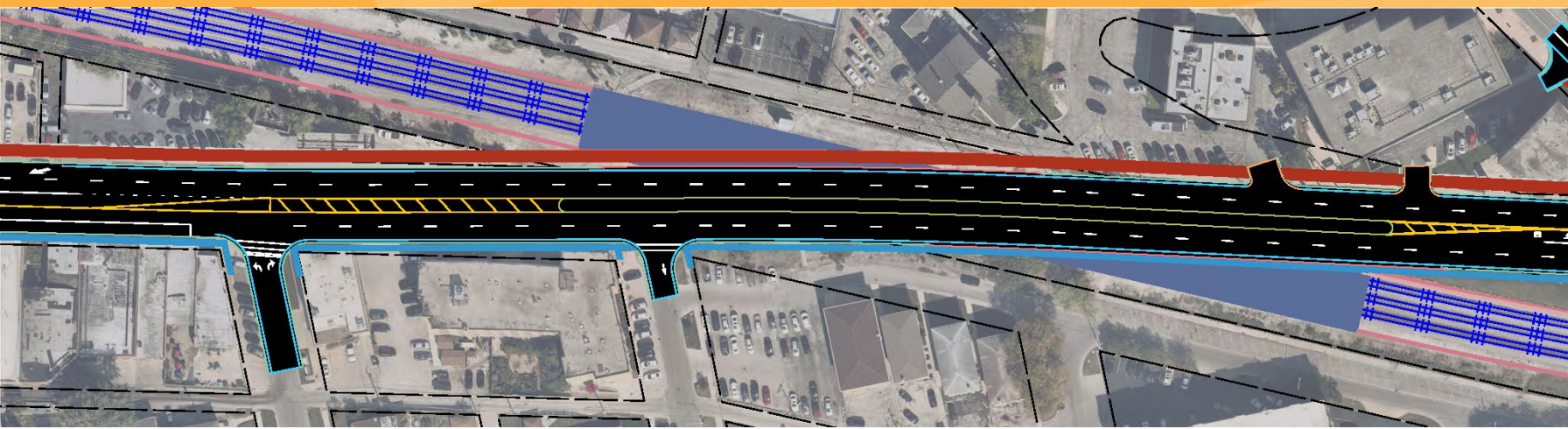


ISSUES:

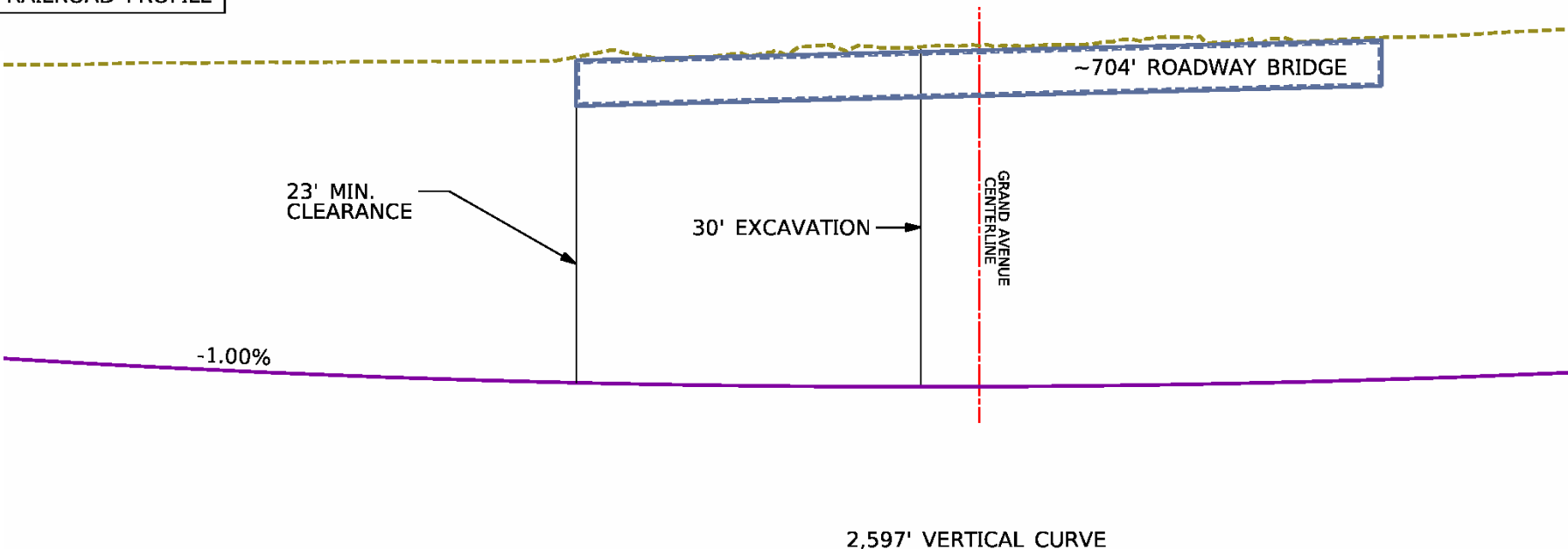
- 1 residential displacements
- 0 commercial displacements
- 19 parking spaces are impacted
- Access to Metra pick-up/drop-off is impacted

ALTERNATIVE #5

Railroad Under Grand Avenue



RAILROAD PROFILE

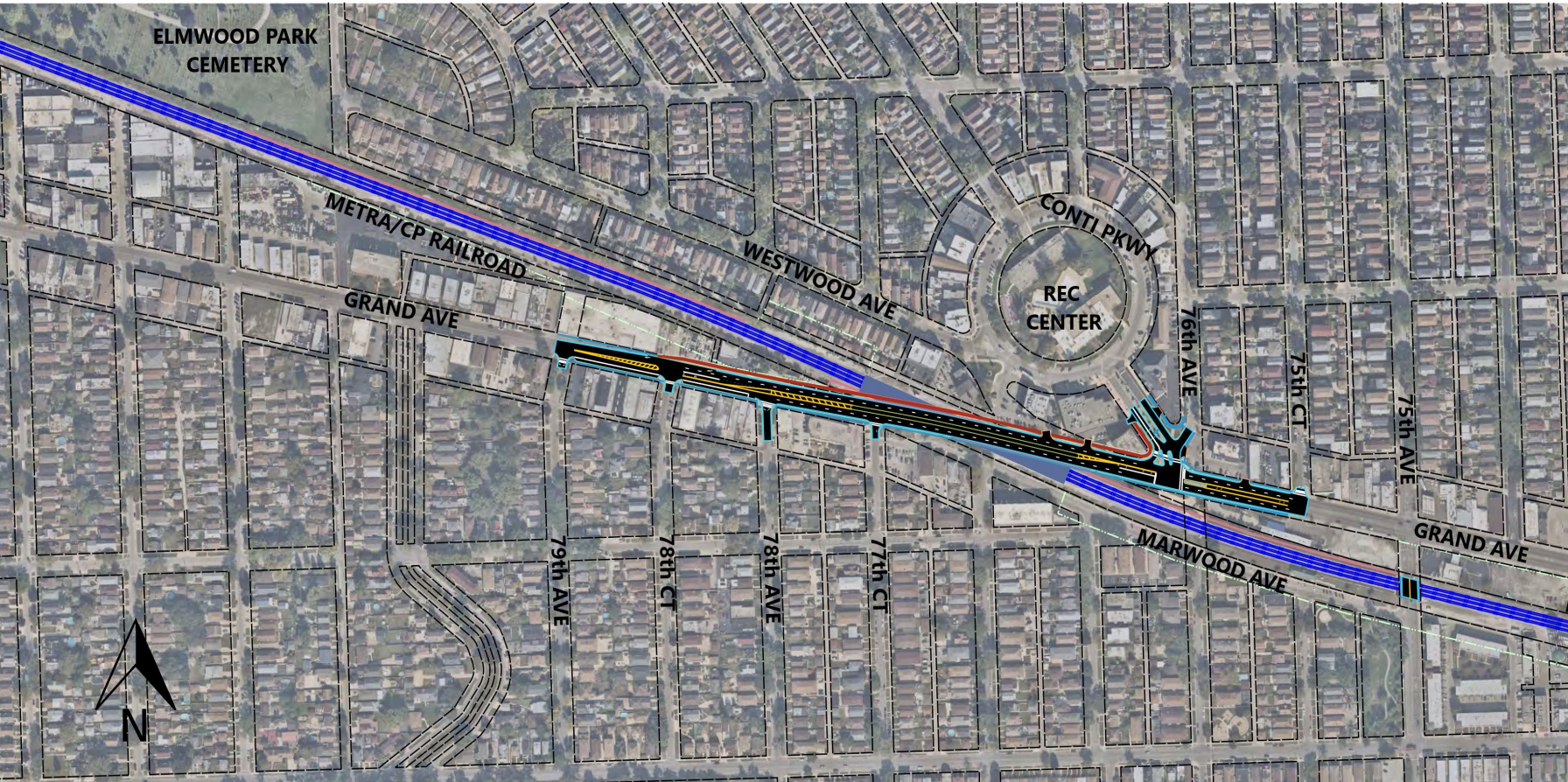


DESIGN:

- Grand Avenue is reconstructed from 79th Avenue to 75th Court
- 12-foot travel lanes
- 5-foot sidewalk south side of Grand Avenue and 10 foot shared-use path along the north side of Grand Avenue
- Metra operations will be impacted
- Metra station will be reconstructed

ALTERNATIVE #5

Railroad Under Grand Avenue

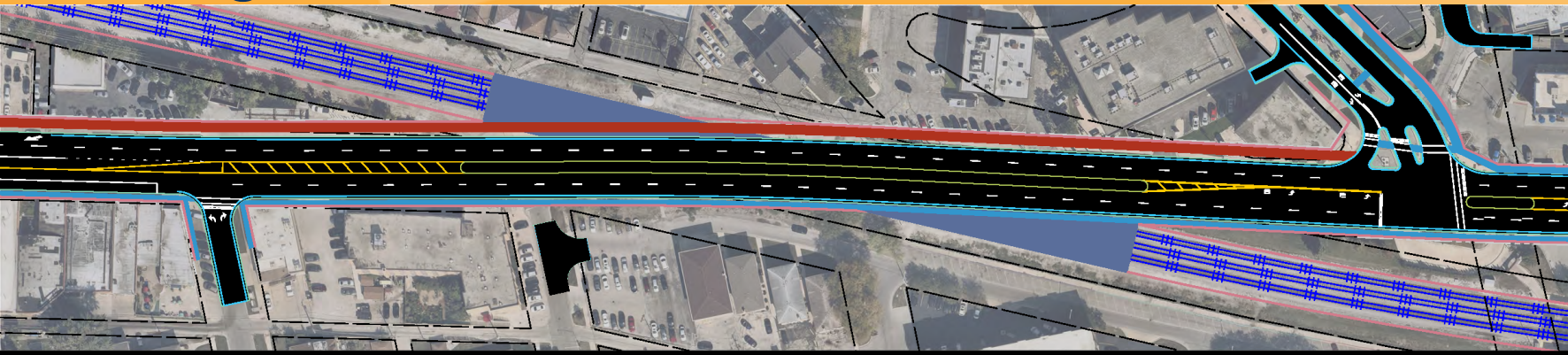


ISSUES:

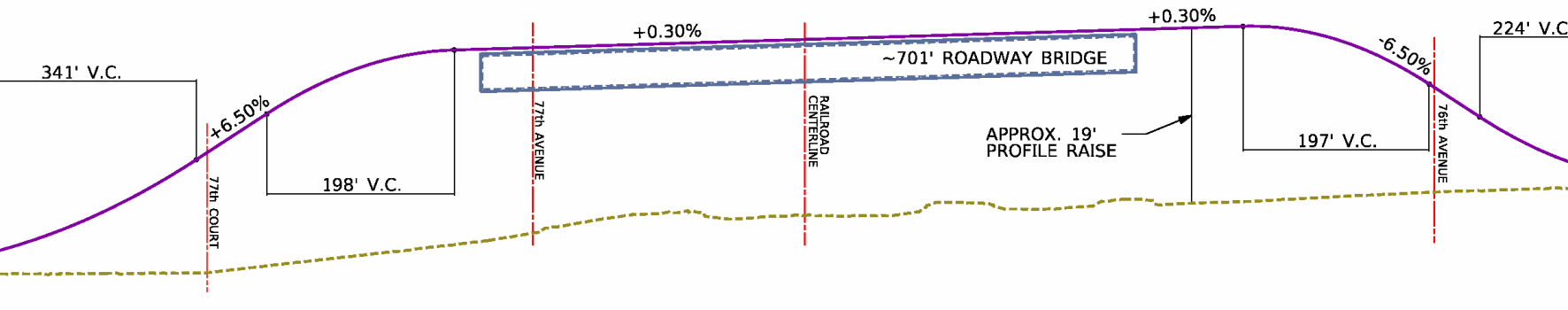
- 19 residential displacements
- 18 commercial displacements
- Access to Metra pick-up/drop-off is impacted
- Total length of railroad to be constructed at a profile below existing grade (which extends beyond Harlem Avenue)

ALTERNATIVE #6

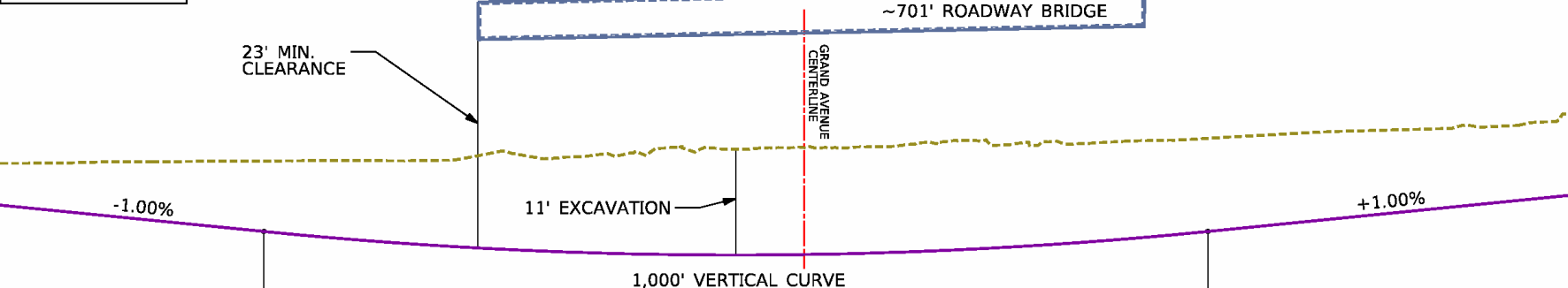
Combination of Lowering Railroad Under & Raising Grand Avenue



GRAND AVENUE PROFILE



RAILROAD PROFILE

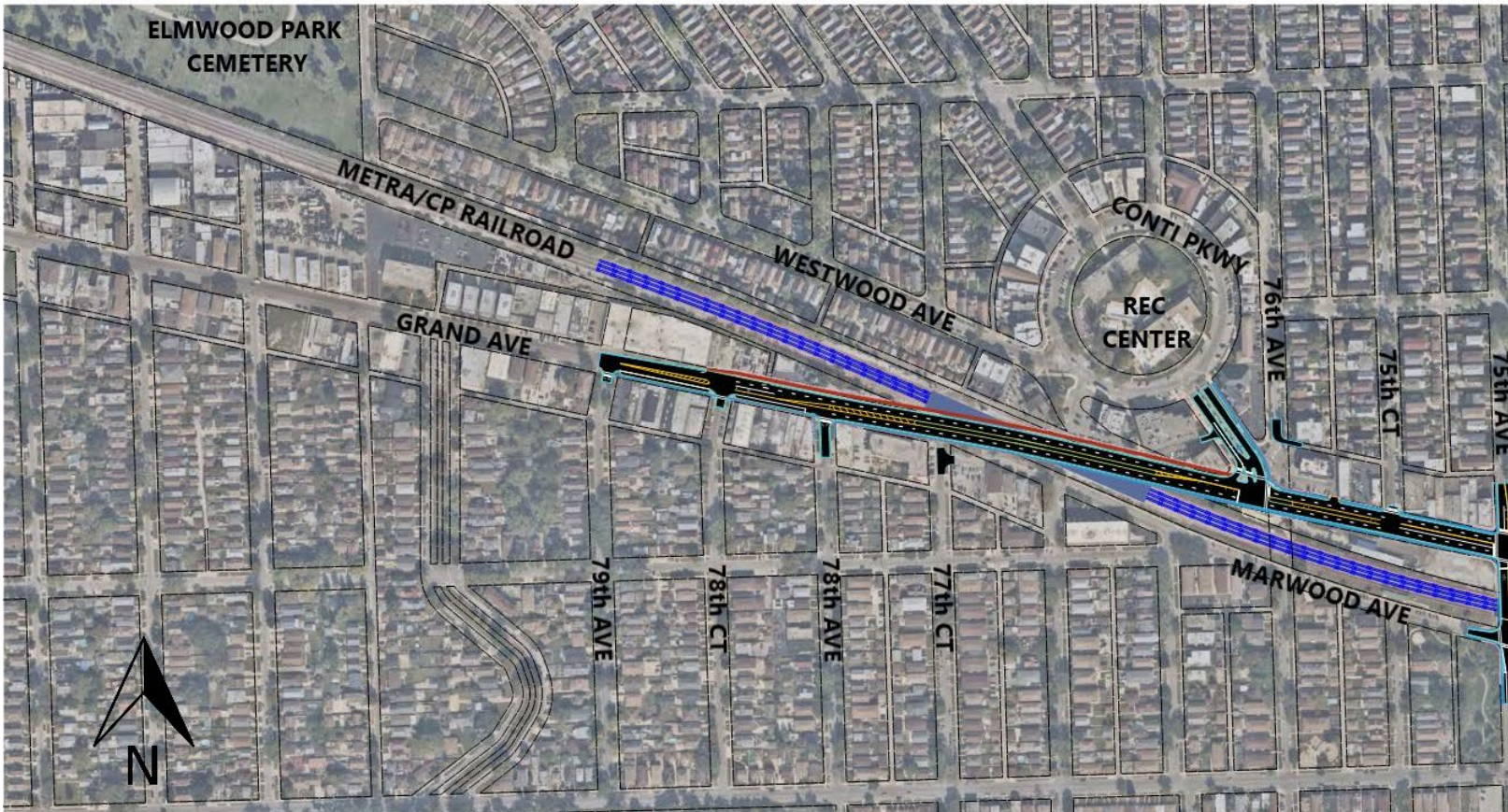


DESIGN:

- Grand Avenue is reconstructed from 79th Avenue to 75th Avenue
- 12-foot travel lanes
- 5-foot sidewalk south side of Grand Avenue and 10 foot shared-use path along the north side of Grand Avenue
- Metra operations will be impacted
- Metra station will be reconstructed

ALTERNATIVE #6

Combination of Lowering Railroad Under & Raising Grand Avenue



ISSUES:

- 2 residential displacements
- 3 commercial displacements
- Access to 77th Avenue is removed from Grand Avenue
- Access to Elmwood Park Fire Station and Library is removed from Grand Avenue
- Spur from 76th Avenue is removed
- 19 Parking spaces are impacted
- Access to Metra pick-up/drop-off is impacted

ALTERNATIVES COMPARISON



Alternatives	Cost	Displacements**		Right of Way Acquisition**	Sideroad/Access Impacts**
		Residential	Commercial		
Alternative 1 Grand Avenue over Railroad	\$107M	2	11	10,650 SQ FT	4
Alternative 2 Grand Avenue Under Railroad	\$79M	2	4	8,320 SQ FT	3
Alternative 3 Hybrid Railroad over and Grand Avenue Under	\$125M	1	3	10,490 SQ FT	1
Alternative 4 Railroad Over Grand Avenue	\$135M	1	0	8,915 SQ FT	0
Alternative 5 Railroad Under Grand Avenue	\$589M	19	18	649,250 SQ FT	0
Alternative 6 Hybrid Grand Avenue Over and Railroad Under	\$98M	2	3	5,815 SQ FT	3

** Sample of key evaluation criteria provided here for discussion. All evaluation criteria, survey outreach, criteria weighting, measure of impacts, and relative scoring will be considered in the decision-making process.

WORKSHOP CRITERIA FOR ALTERNATIVE ANALYSIS



PURPOSE AND NEED STATEMENT

The purpose of the project is to **alleviate congestion** and **improve safety** and **mobility** to all transportation users at the Grand Avenue and Metra/Canadian Pacific Railroad crossing. In addition to improving safety, project improvements are expected to **increase mobility throughout the region.**

WORKSHOP CRITERIA FOR ALTERNATIVE ANALYSIS



SCREENING PROCESS

Alternative must satisfy the project purpose and need:

Project Need:

- The 10 degree crossing skew angle results in an unconventionally long crossing which requires vehicles an above average amount of time to traverse the crossing.
- The unsafe existing crossing condition causes vehicles to be potentially trapped on the railroad crossing.
- The Federal Railroad Administration 2020 Accident Prediction Report ranks this crossing as the **sixth most likely** to have a collision out of 7,920 crossings in the State of Illinois.
- In 2005, the National Transportation Safety Board recommended that a grade separation be constructed at the Grand Avenue grade crossing.
- The current and future demands of vehicular, railway, and pedestrian traffic dictate the need to address existing deficiencies.
- Current peak traffic volumes on Grand Avenue and the surrounding roadway network result in a high level of congestion within this region.

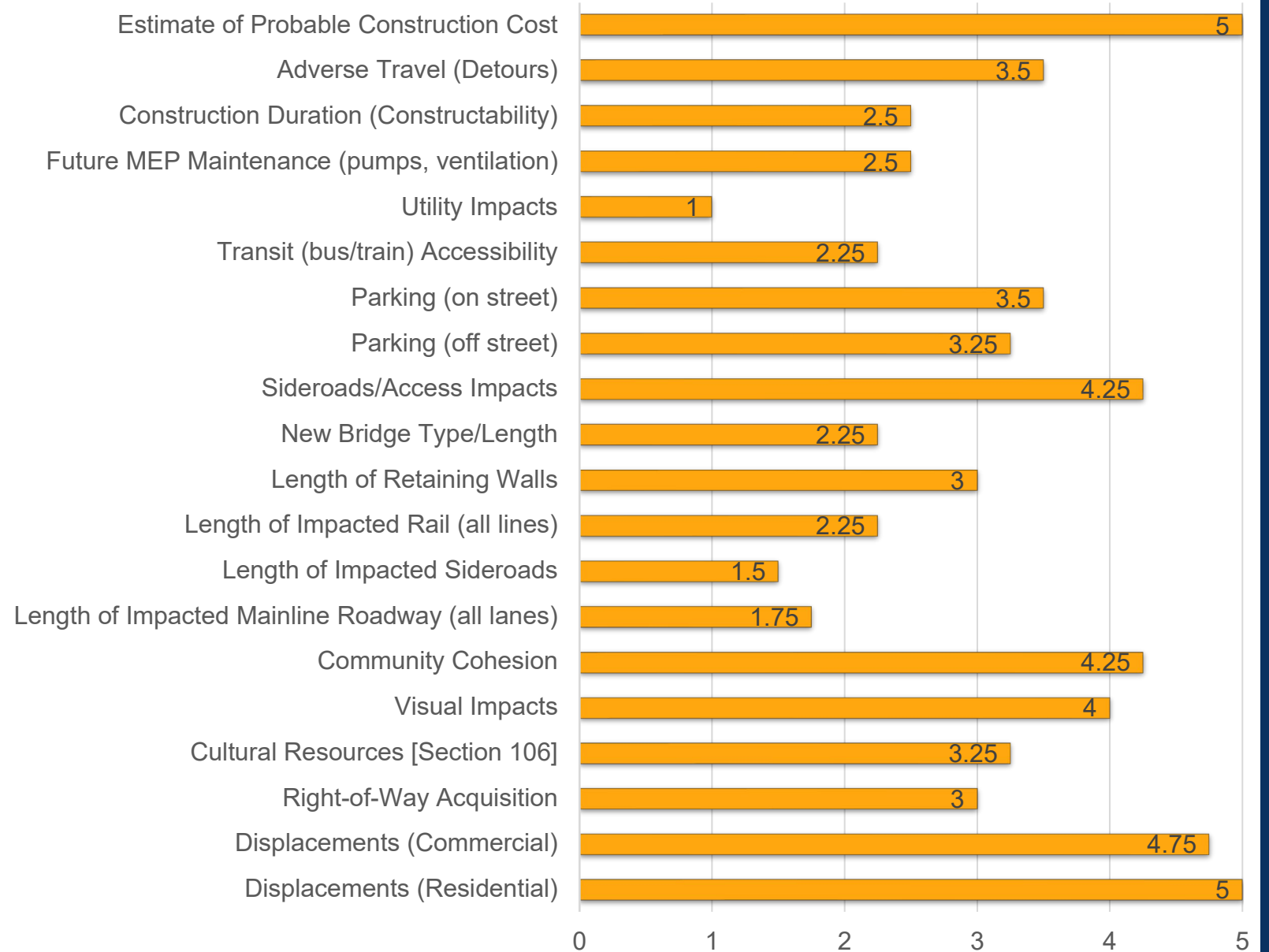
Project Purpose:

- Alleviate congestion and mobility to roadway (vehicular, pedestrian, bicyclists) transportation users at the Grand Avenue and Metra/Canadian Pacific Railroad crossing while eliminating roadway and train conflicts.

SURVEY RESULTS

**** Evaluation criteria weight or importance shown was determined through survey of the Village representatives and technical project team members. Values provided for each evaluation criteria is an average of all responses.**

Evaluation Criteria Weight of Importance**





Breakout Session

BREAKOUT SESSION

Discussion/Questions



Any criteria not covered in the survey?



Questions about any of the alternatives?



Comments about any of the alternatives?

WORKSHOP CRITERIA FOR ALTERNATIVE ANALYSIS

BRAINSTORMING SESSION

Wrap Up





PUBLIC INFORMATION MEETING #2

PUBLIC INFORMATION MEETING



Public Information Meeting #2 is to be Held Virtually early in 2022

Request public comments on:

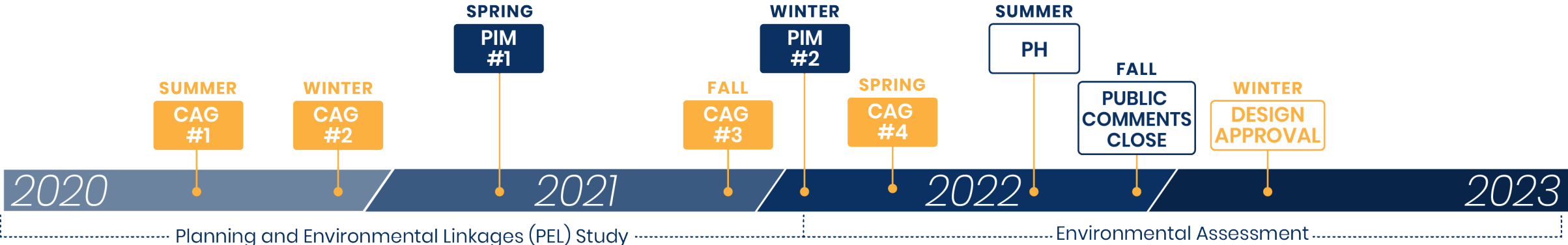
- Alternatives
- Criteria for Evaluation





NEXT STEPS

PHASE I STUDY TIMELINE



CAG	Community Advisory Group Meeting	PUBLIC COMMENTS CLOSE	Targeted Public Comments Closing
PIM	Public Information Meeting	DESIGN APPROVAL	Targeted Design Approval
PH	Public Hearing		

Subject to change



DISCUSSION

Your continued involvement and input is important to this project!

Thank you!

For more information or to view project materials visit:

grandgatewayep.com

Or email:

info@grandgatewayep.com