

GRAND GATEWAY - GRADE SEPARATION STUDY

*Community Advisory Group (CAG) Meeting #2
February 18, 2021*



- 1. Introductions**
- 2. Community Advisory Group Meeting #1 Recap**
- 3. Project Review**
- 4. Planning & Environmental Linkages (PEL)
Process Overview**
- 5. Draft Problem Statement**
- 6. Draft Purpose & Need**
- 7. Workshop – Criteria for Alternative Analysis**
- 8. Public Information Meeting #1 Overview**
- 9. Discussion**



INTRODUCTIONS

INTRODUCTIONS

Project Team



KNIGHT

Engineers & Architects

Clay Shipley, *Vice President*
Scott Brejcha, *Senior Project Manager*
Kevin Walsh, *Environmental Planner*

METRO
strategies

Abby Monroe, *Vice President*
Mandi Jennings, *Senior Project Manager*



Joseph Chiczewski, *President*



GSG CONSULTANTS, INC.
Engineers & Scientists

Dawn Edgell, *Project Manager*



ALTUSWORKS INC.

Chelsea Medek, *Architect*

INTRODUCTIONS

CAG Members



Village of Elmwood Park
 Elmwood Park Fire Prevention
 Elmwood Park Police Department
 Elmwood Park Chamber of Commerce



Department of
 Transportation
 and Highways



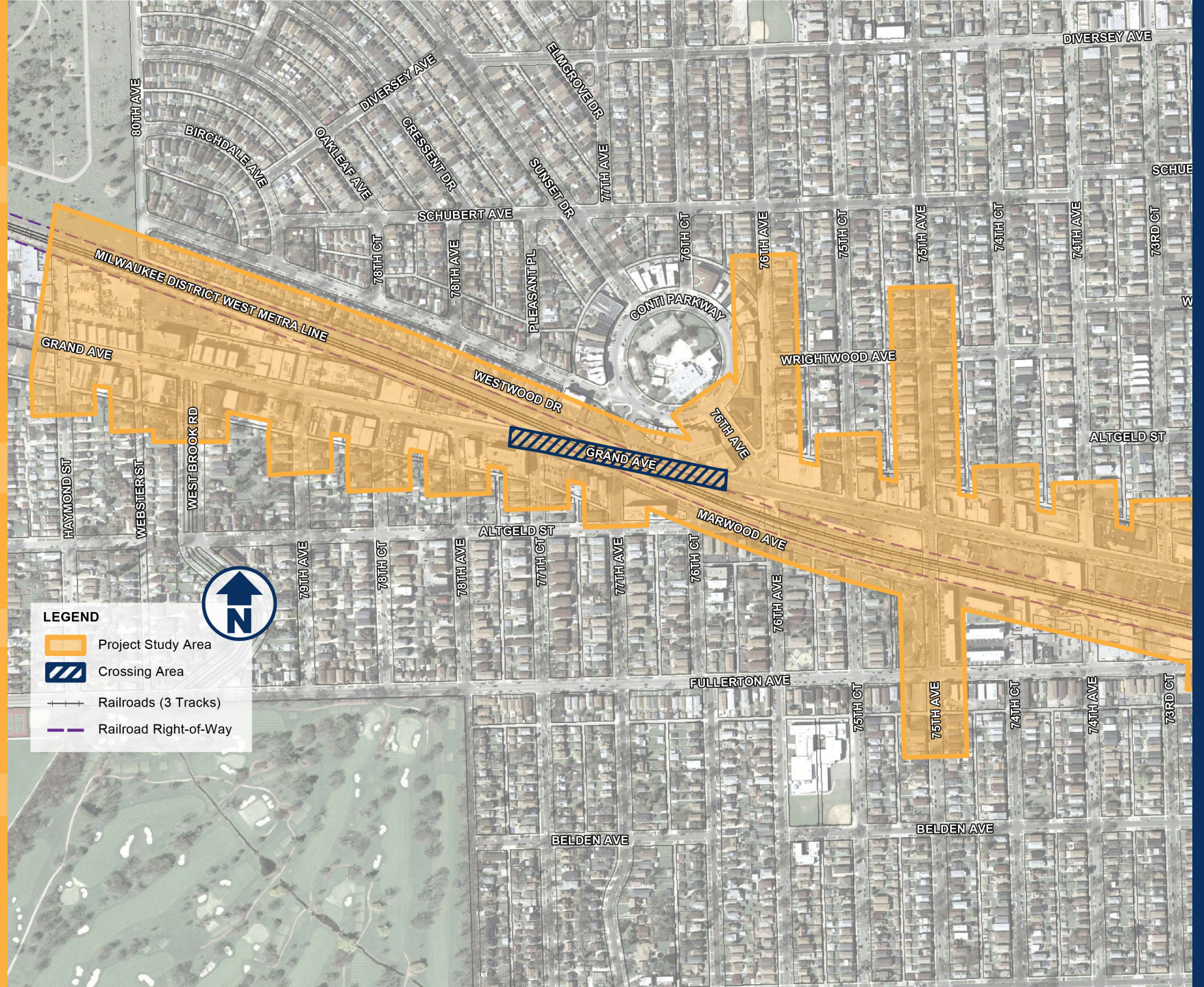


COMMUNITY ADVISORY GROUP MEETING #1

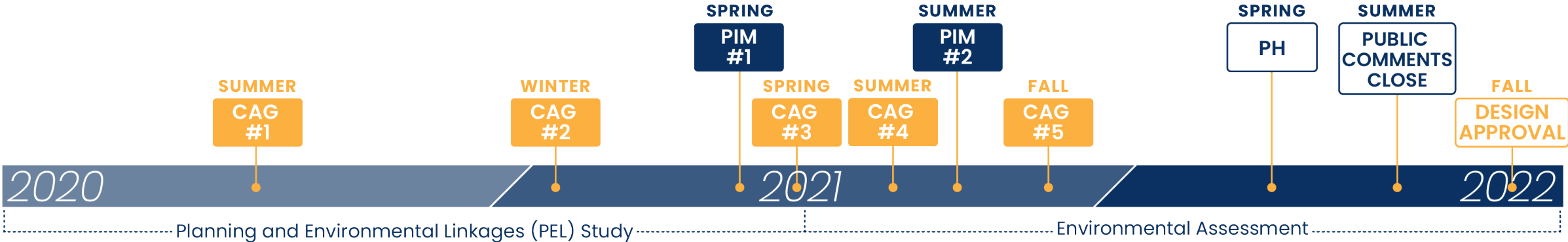


PROJECT REVIEW

PROJECT AREA MAP

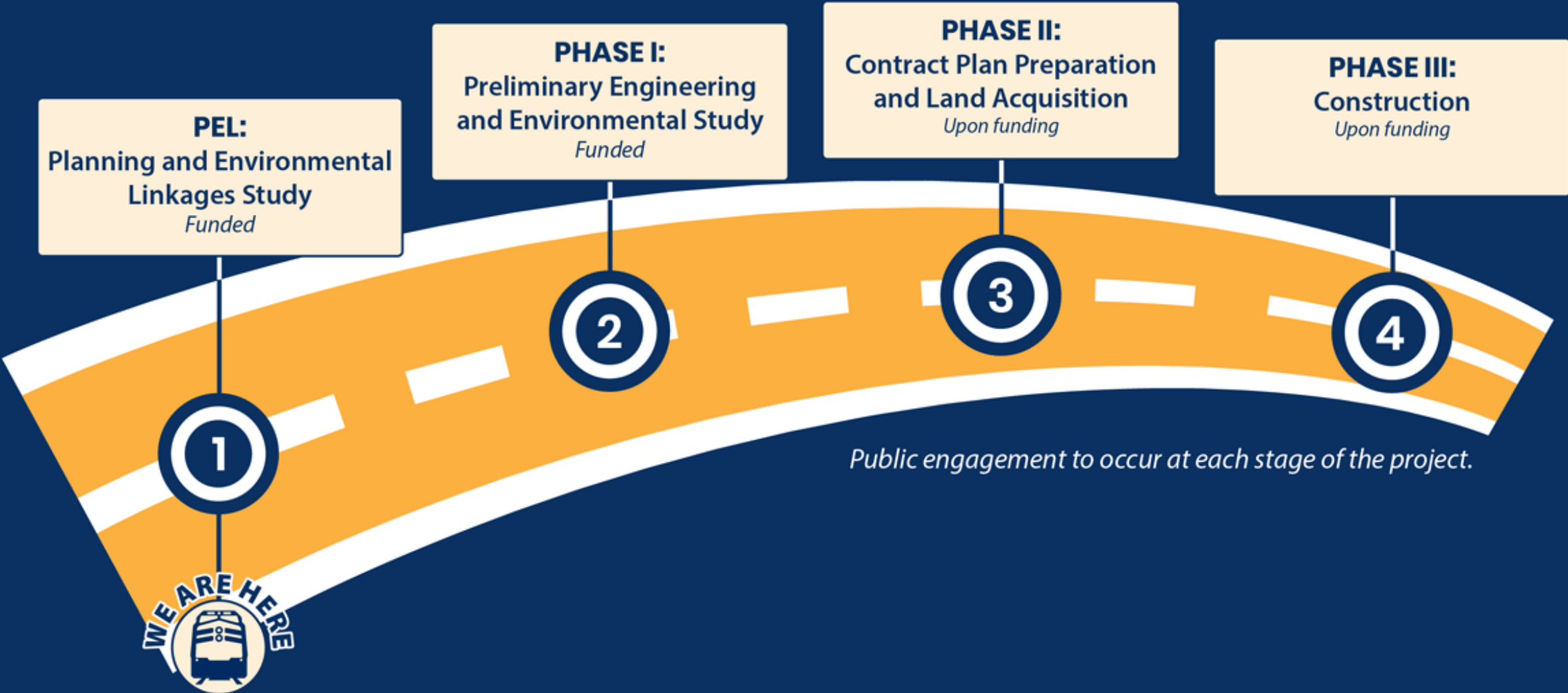


PHASE I STUDY TIMELINE



CAG	Community Advisory Group Meeting	PUBLIC COMMENTS CLOSE	Targeted Public Comments Closing
PIM	Public Information Meeting	DESIGN APPROVAL	Targeted Design Approval
PH	Public Hearing		

PROJECT DEVELOPMENT PROCESS





GRAND GATEWAY PROJECT OVERVIEW PROJECT DETAILS PUBLIC OUTREACH PROJECT RESOURCES STAY CONNECTED



PROJECT OVERVIEW

Welcome

In Elmwood Park, public safety has been one of the highest concerns for many years, particularly where Grand Avenue crosses the Metra/CP. The Village of Elmwood Park in conjunction with the Illinois Department of Transportation (IDOT) and Cook County Department of Transportation and Highways (CCDOH) are committed to resolving the safety and mobility issues at this crossing and are thrilled to announce the initiation of a *Planning and Environmental Linkages (PEL)* study that will inform a *Phase I*

**CHECK OUT
OUR NEW
WEBSITE!**



PLANNING & ENVIRONMENTAL LINKAGES (PEL) PROCESS OVERVIEW

WHY USE PLANNING & ENVIRONMENTAL LINKAGES (PEL)?



Public/ Stakeholder Input

Provides the public with an early opportunity to provide meaningful input into projects



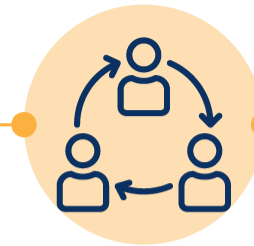
Analysis

Examines transportation, environmental, community and economic goals in the planning process



Collaboration

A collaborative approach to transportation decision-making



Efficiency

Delivers an efficient and smooth decision-making process that encourages working relationships between local government, agencies and transportation departments



Information

Information developed during planning is used to *inform and expedite* the environmental review process



DRAFT PROBLEM STATEMENT

DRAFT PROBLEM STATEMENT PROCESS



**PUBLIC
INVOLVEMENT**

**COMMUNITY
CONCERNS**

**TRANSPORTATION
NEEDS**

**PROBLEM
STATEMENT**

**TECHNICAL
EVALUATION**

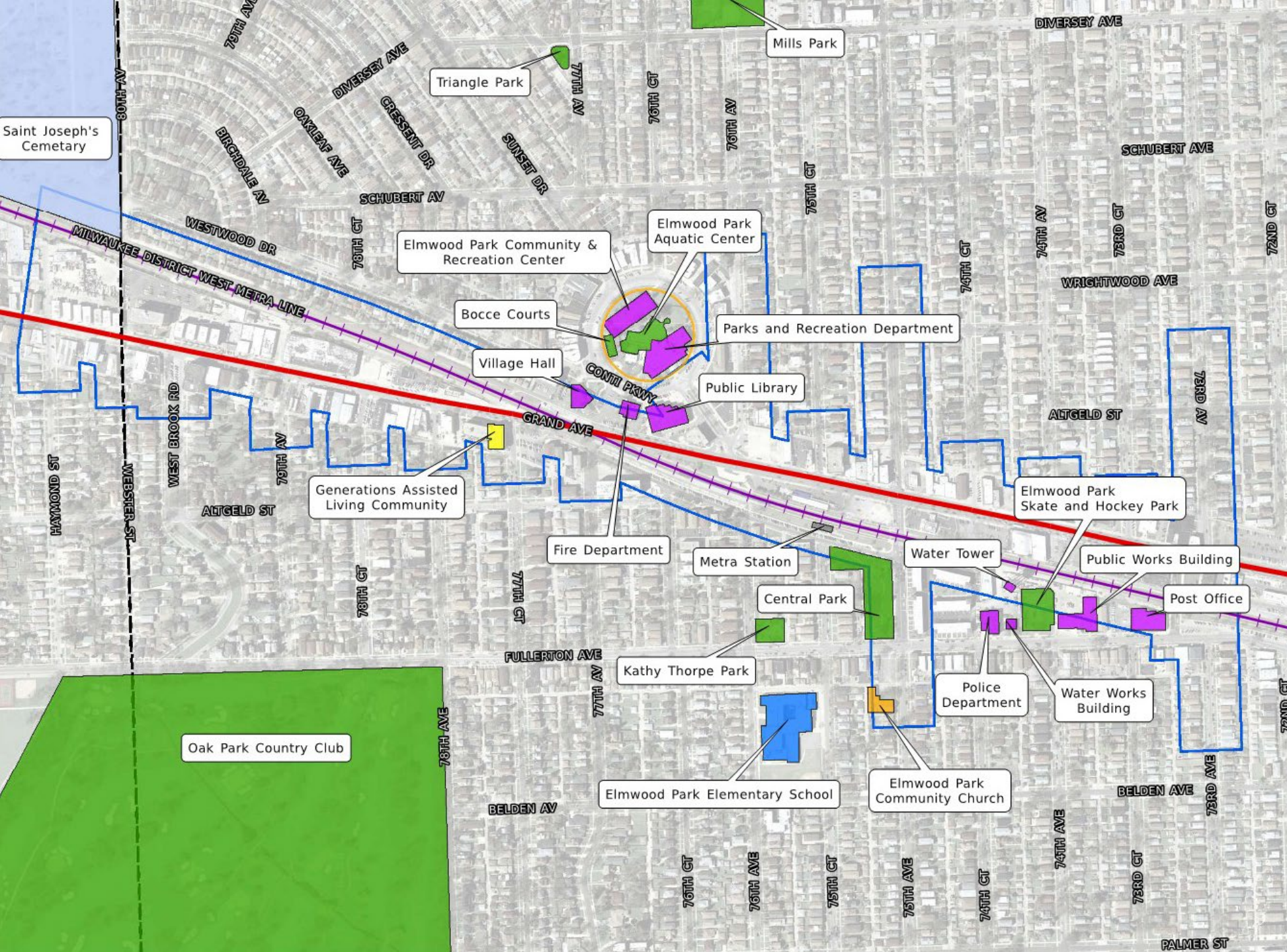
**PURPOSE
AND NEED**

DRAFT PROBLEM STATEMENT

Grand Avenue located in the Village of Elmwood Park, Cook County, Illinois is a diagonal roadway that crosses the Metra/Canadian Pacific Railroad tracks. The Grand Avenue corridor originates in the Central Business District of Chicago and provides access to the west and northwest areas of the city and surrounding suburbs. The corridor includes the following surrounding land uses: residential, commercial, institutional, open space and transit.

The transportation problems along Grand Avenue to be solved by this project include, traffic congestion, safety, multi-modal transportation and access. The current at-grade crossing creates a major safety issue for not only vehicles crossing the tracks but also for first responders traveling to emergencies within the study area.

Solutions should include community connectivity and character as well as congestion relief for all modes of travel: vehicles, transit, pedestrians and rail.



Legend

- Grand Avenue
- ESR Limits
- + Railroads
- Conti Circle
- Assisted Living
- Cemetary
- Educational
- Municipal
- Recreational
- Religious
- Transit
- Municipality



DRAFT PURPOSE & NEED

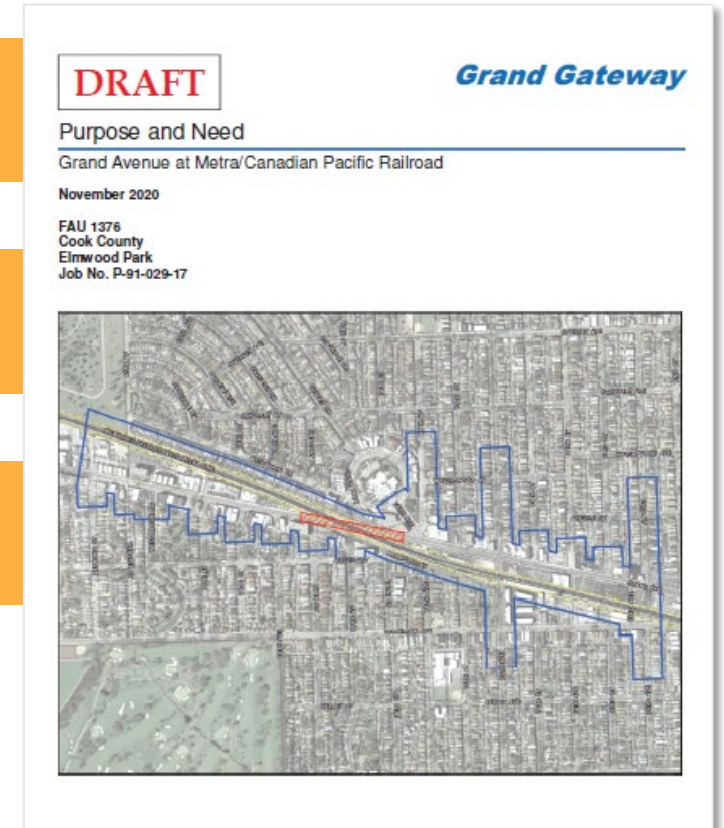
DRAFT PURPOSE & NEED

The project **Purpose & Need (P&N)** is a technical document, which presents a concise introduction of transportation system needs as a result of **system limitations, deficiencies, service and operations.**

»»» Outline and justification

»»» Draft P&N will be revisited by CAG

»»» FHWA and IDOT review as part of the PEL process



DRAFT PURPOSE & NEED

PROJECT NEED

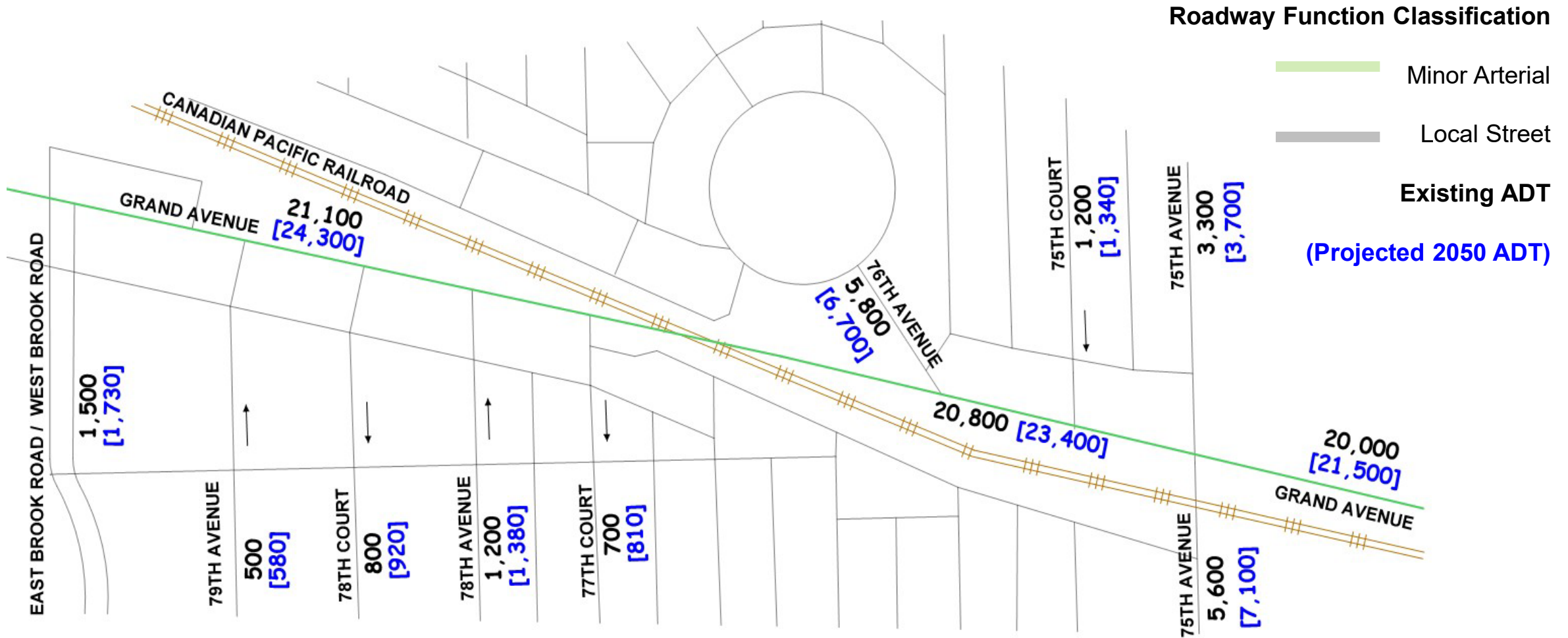
- As the suburban population of the Chicago metropolitan area grows, transportation **usage is expected to increase** on Grand Avenue and the Metra/Canadian Pacific Railroad.
- In addition to future traffic demand, factors contributing to **safety deficiencies** include:
 - the acute angle of the Grand Avenue intersection and the rail tracks,
 - the long distance required to traverse the tracks.
- Subsequent to a **severe train/vehicle crash** that occurred in November 2005, the National Transportation Safety Board's official safety **recommendation** to the Governor of Illinois and the Illinois Commerce Commission was that **a grade separation be constructed** at the Grand Avenue grade crossing.

DRAFT PURPOSE & NEED

PROJECT PURPOSE

The purpose of the project is to **alleviate congestion** and **improve safety** and **mobility** to all transportation users at the Grand Avenue and Metra/Canadian Pacific Railroad crossing. In addition to improving safety, project improvements are expected to **increase mobility throughout the region**.

TRAFFIC VOLUMES



GRAND AVENUE @ 78TH COURT

ANGLE, REAR END, SIDESWIPE (SAME DIRECTION), TURNING
TOTAL CRASHES = 9
TURNING - 56%
TOTAL INJURY = 1

GRAND AVENUE @ 77TH COURT

ANGLE, OVERTURNED, PARKED VEHICLE, REAR END
TOTAL CRASHES = 5
ANGLE - 40%
TOTAL INJURY = 1

GRAND AVENUE @ 76TH AVENUE

FIXED OBJECT, REAR END, TURNING
TOTAL CRASHES = 9
REAR END - 45%
TURNING - 45%
TOTAL INJURIES = 2

GRAND AVENUE @ 79TH AVENUE

ANGLE, PARKED VEHICLE REAR END, SIDESWIPE (SAME DIRECTION)
TOTAL CRASHES = 7
SIDESWIPE (SAME DIRECTION) - 43%
TOTAL INJURY = 1

GRAND AVENUE @ 78TH AVENUE

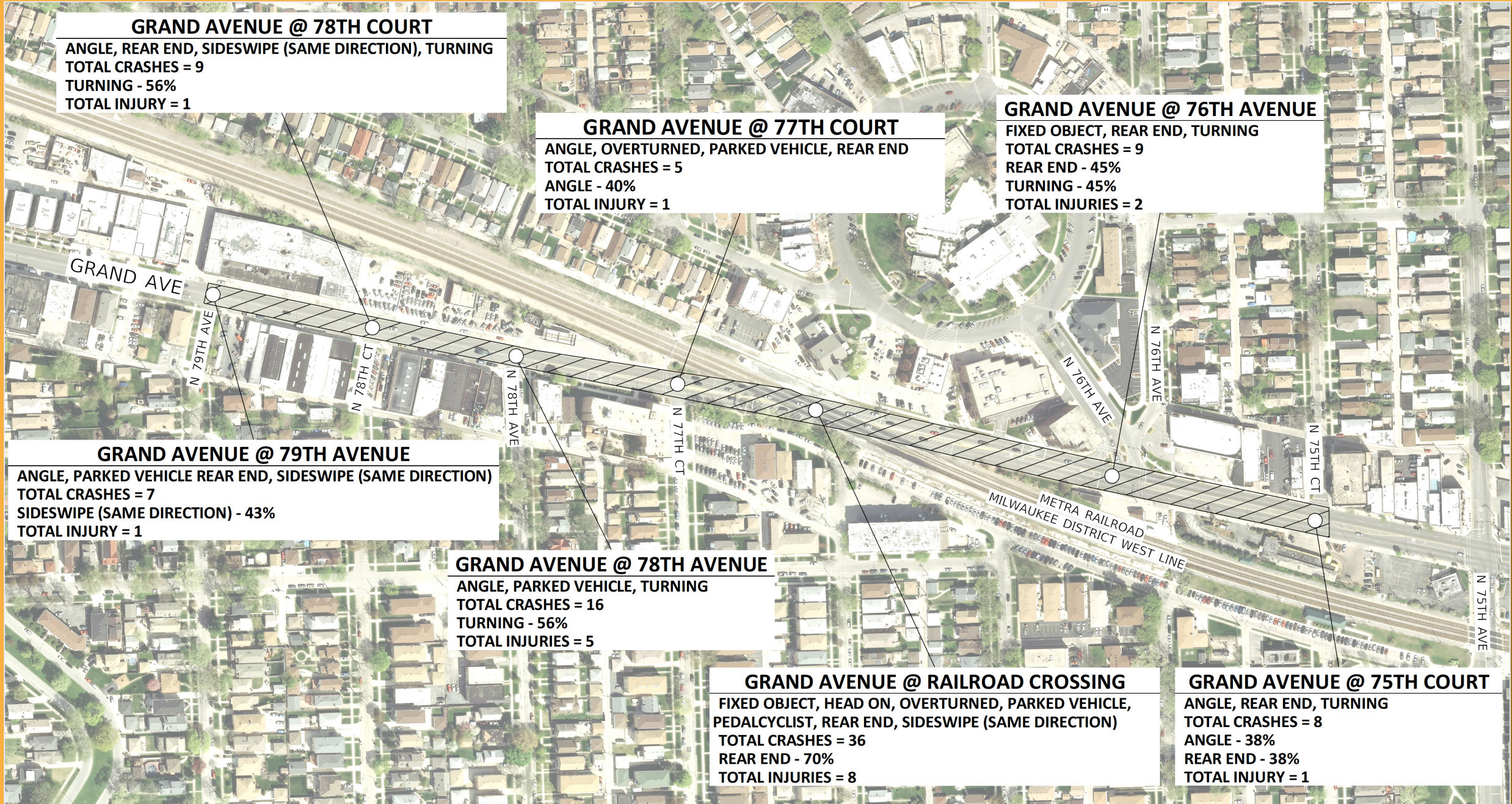
ANGLE, PARKED VEHICLE, TURNING
TOTAL CRASHES = 16
TURNING - 56%
TOTAL INJURIES = 5

GRAND AVENUE @ RAILROAD CROSSING

FIXED OBJECT, HEAD ON, OVERTURNED, PARKED VEHICLE,
PEDALCYCLIST, REAR END, SIDESWIPE (SAME DIRECTION)
TOTAL CRASHES = 36
REAR END - 70%
TOTAL INJURIES = 8

GRAND AVENUE @ 75TH COURT

ANGLE, REAR END, TURNING
TOTAL CRASHES = 8
ANGLE - 38%
REAR END - 38%
TOTAL INJURY = 1



GRAND AVENUE (79TH AVENUE TO 78TH COURT)

PARKED VEHICLE, REAR END, SIDESWIPE (SAME DIRECTION),
SIDESWIPE (OPPOSITE DIRECTION)
TOTAL CRASHES = 7
SIDESWIPE (SAME DIRECTION) - 57%
TOTAL INJURY = 1

GRAND AVENUE (RR XING TO 76TH AVENUE)

FIXED OBJECT, OTHER NON COLLISION, REAR END, SIDESWIPE
(SAME DIRECTION)
TOTAL CRASHES = 11
REAR END - 46%
TOTAL INJURIES = 2

GRAND AVENUE (78TH AVENUE TO 77TH COURT)

ANGLE, FIXED OBJECT, OTHER OBJECT, PARKED VEHICLE, PEDALCYCLIST,
PEDESTRIAN, REAR END, SIDESWIPE (SAME DIRECTION)
TOTAL CRASHES = 14
REAR END = 36%
TOTAL INJURIES = 5

GRAND AVENUE (78TH COURT TO 78TH AVENUE)

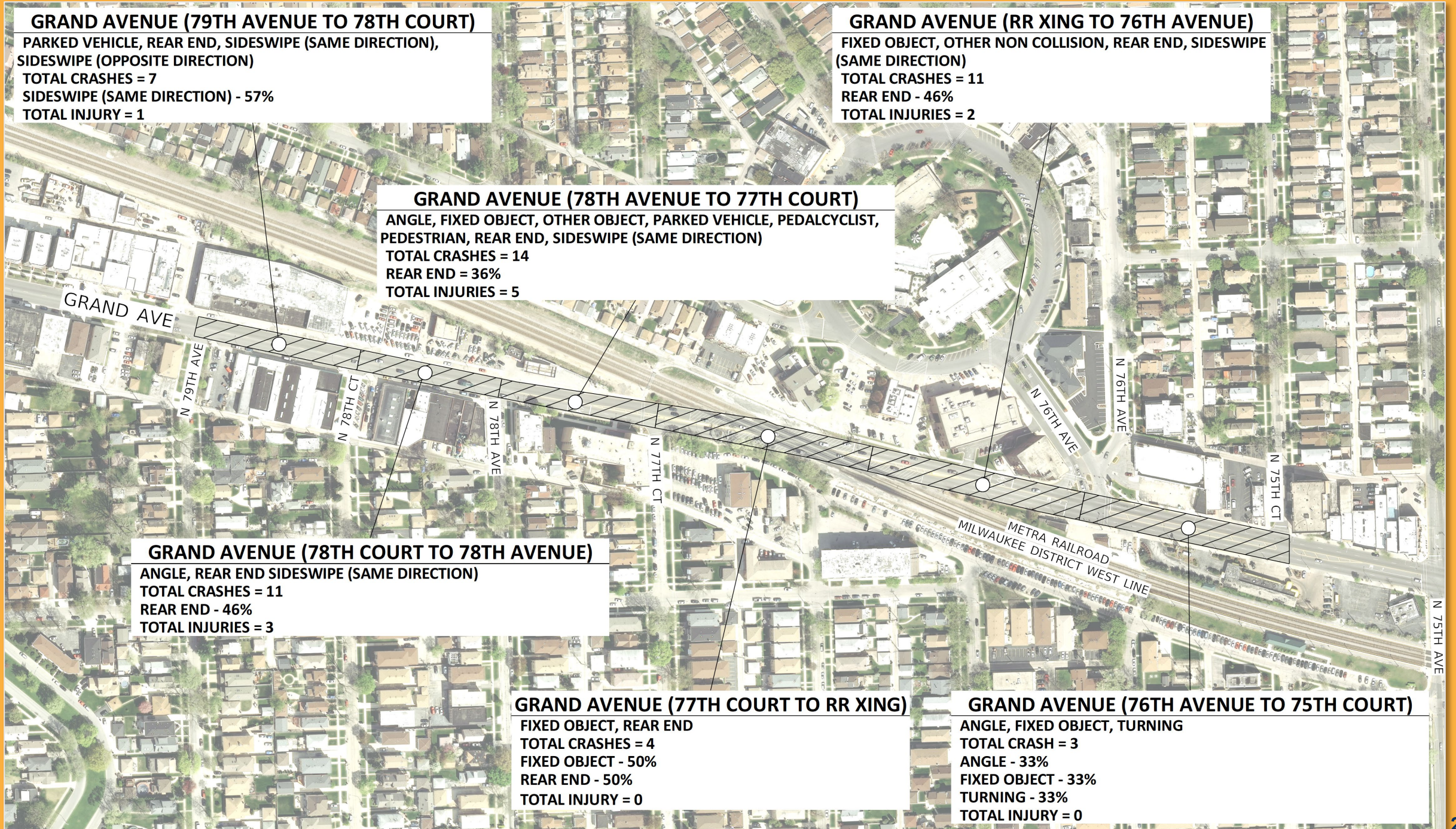
ANGLE, REAR END SIDESWIPE (SAME DIRECTION)
TOTAL CRASHES = 11
REAR END - 46%
TOTAL INJURIES = 3

GRAND AVENUE (77TH COURT TO RR XING)

FIXED OBJECT, REAR END
TOTAL CRASHES = 4
FIXED OBJECT - 50%
REAR END - 50%
TOTAL INJURY = 0

GRAND AVENUE (76TH AVENUE TO 75TH COURT)

ANGLE, FIXED OBJECT, TURNING
TOTAL CRASH = 3
ANGLE - 33%
FIXED OBJECT - 33%
TURNING - 33%
TOTAL INJURY = 0





WORKSHOP

CRITERIA FOR ALTERNATIVE ANALYSIS

WORKSHOP CRITERIA FOR ALTERNATIVE ANALYSIS



SCREENING PROCESS

- To provide an efficient and safe system
- To address needs defined within the purpose and need



WORKSHOP CRITERIA FOR ALTERNATIVE ANALYSIS

BRAINSTORMING SESSION

Concepts/Ideas of Potential Improvements



Pedestrian/Bicycle



Transit



Environmental



Vehicle



First Responders

WORKSHOP CRITERIA FOR ALTERNATIVE ANALYSIS

BRAINSTORMING SESSION Wrap Up





PUBLIC INFORMATION MEETING

PUBLIC INFORMATION MEETING



Public Information Meeting #1 is to Be Held Virtually in the Spring of 2021

Request public comments on:

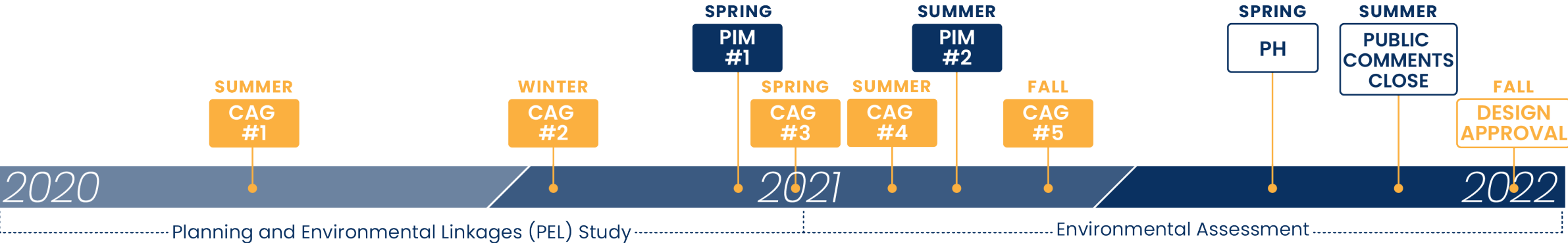
- Safety Issues
- Needed Improvements
- Existing Conditions
- Problem Statement
- Purpose & Need





NEXT STEPS

PHASE I STUDY TIMELINE



CAG	Community Advisory Group Meeting	PUBLIC COMMENTS CLOSE	Targeted Public Comments Closing
PIM	Public Information Meeting	DESIGN APPROVAL	Targeted Design Approval
PH	Public Hearing		



DISCUSSION

Your continued involvement and input is important to this project!

Thank you!

For more information or to view project materials visit:

grandgatewayep.com

Or email:

info@grandgatewayep.com